

Public Hearing Report

Randall Road at US 20/Weld Road (East)
Intersection Improvement

Kane County Division of Transportation

Elgin, Kane County, IL

February 3, 2017



Contents

1	Introduction	1
2	Public Hearing Materials.....	2
2.1	Public Hearing Invitation	2
2.2	Advertisement.....	2
2.3	Website and Social media	2
3	Public Hearing	2
3.1	Public Hearing Comments	2

Tables

Table 1.	Summary of Meeting Comments and Questions	3
----------	---	---

Figures

Figure 1.	Project Area	1
-----------	--------------------	---

Appendices

Appendix A. Public Meeting Notifications

Appendix B. Sign-In Sheets

Appendix C. Presentation and Display Boards

Appendix D. Written Comments

Appendix E. Transcript

1 Introduction

Kane County Division of Transportation (KDOT) is conducting an Engineering and Environmental Study of the Randall Road at US 20/Weld Road (East) intersection in Elgin. The Study includes the intersection and approaches, which include the eastbound US 20 exit and entrance ramp and Weld Road (East). A map of the project area is shown in Figure 1.

As Kane County's population continues to grow, congestion at this intersection is expected to worsen. The goals and objectives of this project are to improve safety through reduced congestion and vehicle conflict points and reduce existing and future congestion and traffic delays.

The following summary includes the information and presentation provided during the public hearing and a listing of comments received on the project, with responses. The official comment period for the public hearing ended on December 2, 2016.



Figure 1. Project Area

2 Public Hearing Materials

2.1 Public Hearing Invitation

A public hearing notice was mailed to 746 property owners and residents in the project area. Additional letters were mailed to elected officials for the project area. The mailing list includes residents, business owners, and property owners in the subdivision and commercial area south of Weld Road (East) to South Avenue. The postcard hearing invitation is provided in Appendix A.

2.2 Advertisement

Display ads ran in the main section of the Daily Herald on October 25 and November 8, 2016. In addition, a press release was distributed on November 14, 2016 to local and regional media outlets, including newspapers, radio and television stations, and local online communities. See Appendix A for the press release and display ads.

2.3 Website and Social media

Kane County Connects, a digital community outreach initiative for Kane County with approximately 3,200 followers, posted a hearing advertisement on November 14. In addition, Kane County posted a hearing notice on its website.

3 Public Hearing

The public hearing was held from 4:00 p.m. to 7:00 p.m. on November 15, 2016. The hearing was an open house format, with stations staffed by project team members and a court reporter to take comment. The information stations provided an overview of the project, the need and benefits of the project, a review of the alternatives considered, and a timeline for the project.

Hearing attendees were encouraged to ask questions and provide comment. Forty-nine individuals attended the open house/hearing. A copy of the redacted sign-in sheets is provided in Appendix B.

Copies of the display boards and handout are provided in Appendix C.

3.1 Public Hearing Comments

Hearing attendees were encouraged to view exhibits, ask questions and provide input on the information presented, either verbally to the court reporter or by completing comment cards. Consolidated comments and responses are summarized in Table 1. Complete comments and the hearing transcript are provided in Appendices D and E, respectively.



Table 1. Summary of Meeting Comments and Questions

Issue	Summary of Comment	Response
Access	With the closure of McLean, there will be no direct access to the McIntosh Subdivision from the east. There are destinations within the subdivision, such as a church, that has services all week and need more access. Direct access will only be through South Street or through the theater from the west.	South Street is classified as a collector, intended to serve the surrounding area as a route to Randall Road and McLean Boulevard. The Illinois Department of Transportation Bureau of Local Roads design manual indicates a two-lane urban collector road can accommodate up to 1,400 vehicles in a peak hour. Traffic data collected on South Street reflects a peak hour volume of 500 vehicles. South Street has capacity for the additional traffic volumes. There will continue to be indirect access of the McIntosh Subdivision to/from the east and west.
Access	An accident at the intersection of South Street will cut off the main access to and from Randall. The movie theater and fast food places already have too much traffic and backs up onto south street.	In the event of an accident that blocks South Street, there are other routes east and south that can be utilized such as Renner Drive to Spartan Drive or Fleetwood Drive via Second Street.
Business Impacts – Weld Road (East)	Businesses on Weld Road (East) between South St and Shepherd Drive may suffer from lower traffic volumes and ease of customer getting to their businesses.	The businesses on Weld Road (East) will continue to be visible from US 20 and accessible from Weld Road (East). The storage facility, Comcast, and others are businesses drawing destination trips which will continue to easily access those properties.
Context	The primary proposal is interesting and will alleviate a number of problems for traffic on Randall. The 2040 plans for Randall also have additional lanes planned. Part of plan needs to be considered for the traffic flow and how it will affect the entrance and exit ramps being considered now.	KDOT is coordinating with the City of Elgin and IDOT. The project is consistent with the 2040 plans.
Emergency Services	Emergency services will take longer to get to properties north of South Street.	Emergency Services were coordinated with. The primary responding agency, South Elgin Fire Protection District, does not utilize Weld Road (East). Their primary route is South Street. Elgin Fire will assist South Elgin Fire Protection District through an aid agreement. Elgin Fire has determined travel to South Street instead of Weld Road (East) is not significant.
Funding	The timeline for completion is unclear, given the funding for the state.	This project is in the study phase and will be submitted for federal funding for future design phases. Construction funding will be identified as the project progresses.



Issue	Summary of Comment	Response
Improvements to South Street	South Street will need improvements to accommodate the truck traffic at the intersection of South Street and Second Street.	South Street is under the jurisdiction of the City of Elgin. Discussions were held between KDOT and the City regarding the number of semi-tractor trailer trucks currently traveling South Street. KDOT indicated that there are approximately 90 semi-tractor trailer trucks counted over a 24-hour period. The City's Parking and Traffic Committee indicated that based on the low number of semi-trucks utilizing South Street over a 24-hour period, they would not propose to change the current dynamics of South Street at this time.
Noise	Construction of the McLean project created a lot of noise.	Construction noise would be temporary and would take place during normal working hours.
Other improvements	Issues could be resolved with improvement of the Foothill access to Airlite and Larkin Avenue and a better access road to ECC from Randall Road.	This project is intended to look at specific safety and existing and future capacity issues at the intersection of Randall Road at US20/Weld Road (East). Improvements north of US 20 off of Randall Road are outside the scope of this project.
Other improvements	<p>Proposal for alternate configuration to include</p> <ol style="list-style-type: none"> 1) Adding an East bound entrance ramp to US 20 located east of the Randall-Weld Road (East) intersection (accessible by Northbound Randall Road and Weld Road (East) traffic). 2) Adding a 2nd east bound US 20 exit ramp east of Randall Road onto Weld Road (East) (for drivers intending on traveling north onto Randall Road). 3) Eliminating the stop light at Randall and Weld Road.(East) 	The intent of the subject study of the Randall Road at US 20/Weld Road (East) intersection is for an intersection improvement, rather than an interchange study. The study looked at the operations and safety of the intersection on Randall Road and not specifically interchange alternatives to the US 20 mainline.
Parking	We have and need parking on South Street. Will this eliminate on-street parking?	South Street as it is has capacity to accommodate any redirected traffic without any changes to on-street parking. South Street is under the jurisdiction of the City of Elgin. The City's Parking and Traffic Committee is not proposing to change the current dynamics of South Street at this time.
Pedestrian Crossings	There aren't safe pedestrian crossing areas on either South Street or on Randall Road at South Street.	Kane County and PACE are investigating pedestrian improvements at that intersection as part of a separate project. Funding is currently targeted for 2018.



Issue	Summary of Comment	Response
Safety	The McIntosh Subdivision has no curbs, few streetlights, and no sidewalks. For safety reasons, the McIntosh Subdivision Roads should not be used as a thoroughfare.	The McIntosh Subdivision streets (Gale, Erie, Hawthorne, Airlite, Belmont, Maple and Second, north of South Street) are under the jurisdiction of Elgin Township. Since Weld Road (East) will not be a through street, only local traffic would use Weld Road (East) or any of the McIntosh Subdivision streets.
Speed Limits	Weld Road (East) should be 30 or 35 miles per hour because people who use it now continue onto residential streets at 45 miles per hour. The speed limit signs are too close to the intersections. People speed on South Street and make it unsafe for pedestrians.	Weld Road (East) is under IDOT jurisdiction which have stringent guidelines on altering posted speed limits. Traffic speeding concerns along South Street were forwarded to the City of Elgin to review.
Traffic Control	People are going to ignore the stop sign at the shopping center.	KDOT does not have enforcement authority over traffic control on private property.
Truck Traffic	Increased truck traffic will increase vibration within houses. South Street has potholes and increased truck traffic will worsen the pavement condition.	South Street is under the jurisdiction of the City of Elgin. Based on existing traffic counts, it is anticipated that less than 10 semi-tractor trailer trucks could potentially reroute to South Street during the busiest hour of the day. Pavement condition concerns should be brought up by the residents to the Elgin Public Works Department.
Traffic Impacts - South Street	Traffic will divert from Weld Road (East) down to South Street	<p>KDOT has taken traffic counts along Weld Road (East) and South Street to determine the amount of traffic that could reroute to south street. Based on traffic counts, it is anticipated that less than 300 vehicles could reroute to South Street during the busiest hour of the day.</p> <p>South Street is classified as a collector, intended to serve the surrounding area as a route to Randall Road and McLean Boulevard. The Illinois Department of Transportation Bureau of Local Roads and Streets design manual indicates a two-lane urban collector road can accommodate up to 1,400 vehicles in a peak hour. Traffic data collected on South Street reflects a peak hour volume of 500 vehicles. South Street has capacity for the additional traffic volumes.</p>
Traffic Signals – McLean Boulevard and US 20	There is no right turn on red from McLean Boulevard to US20.	The intersection of McLean Boulevard and US 20 is outside the scope of project improvements.
Traffic Signals – Randall Road and US 20	A traffic signal needs to remain to accommodate traffic that's eastbound on 20 and exiting onto Randall.	The traffic signal will remain and will have two signal phases at Randall Road and US 20: Through traffic on northbound/southbound Randall Road and traffic exiting eastbound US 20 to northbound Randall Road.



Issue	Summary of Comment	Response
Truck Traffic	Truck traffic headed east to the two trucking companies will take South Street, which is a residential street. It won't be safe for children or for the residents.	South Street is classified as a collector, intended to serve the surrounding area as a route to Randall Road and McLean Boulevard and has capacity for the additional traffic volumes. Trucks accessing the industrial park from the west can use the updated McLean Boulevard interchange for maximum efficiency. The City's Parking and Traffic Committee is not proposing to change the current dynamics of South Street at this time, including the restriction of truck traffic.
Truck Traffic	Request for 24-hour counts for truck traffic on Weld Road (East) and South Street to identify what the impacts of truck traffic would be.	Traffic counts taken on Weld Road (East) and South Street included both trucks and passenger vehicles. Based on traffic counts, it is anticipated that less than 10 semi-tractor trailer trucks could potentially reroute to South Street during the busiest hour of the day. Discussions were held between KDOT and the City regarding the number of semi-tractor trailer trucks currently traveling South Street. KDOT indicated that there are approximately 90 semi-tractor trailer trucks counted over a 24-hour period. The City's Parking and Traffic Committee indicated that based on the low number of semi-trucks utilizing South Street over a 24-hour period, they would not propose to change the current dynamics of South Street at this time.
Weld Road (West)	Improvements will be needed at Weld Road (West) to accommodate more traffic there or on South Street (West).	Traffic is not expected to increase along Weld Road (West) or South Street (West) as a result of the proposed improvement at Randall Road and Weld Road (East) / US 20. South Street is under the jurisdiction of the City of Elgin. The City's Parking and Traffic Committee is not proposing to change the current dynamics of South Street at this time.



Appendix A. Public Hearing Invitations



**We'd love
to hear your
thoughts!**

**Randall Road at US 20/Weld Road (East)
Intersection Improvement**

Open House Public Hearing
Tuesday, November 15
4 p.m. to 7 p.m.

Elgin Community College
University & Business Center
Room E-106
1700 Spartan Dr.
Elgin, IL 60123



**We'd love
to hear your
thoughts!**

**Randall Road at US 20/Weld Road (East)
Intersection Improvement**

Open House Public Hearing
Tuesday, November 15
4 p.m. to 7 p.m.

Elgin Community College
University & Business Center
Room E-106
1700 Spartan Dr.
Elgin, IL 60123



The Kane County Division of Transportation (KDOT) is hosting a public hearing about a proposed improvement to the intersection of Randall Road and US 20/Weld Road (East). To improve traffic flow and increase safety at the intersection, the proposed improvement would close the Weld Road (East) access at Randall Road in order to construct a new entrance ramp from northbound Randall Road to eastbound US 20.

The purpose of the hearing is to receive feedback on the proposed improvement. Attendees may visit at any time between 4 and 7 p.m. to review displays, provide comment, and meet with KDOT and project team representatives. For more information, visit us at <http://www.co.kane.il.us/dot> or contact:

Ms. Bonnie Flock Kane County Division of Transportation 41W011 Burlington Road St. Charles, IL 60048 (630) 584-1170 kdotcomments@co.kane.il.us	Ms. Jennifer Mitchell, P.E. HDR Engineering, Inc. 8550 W. Bryn Mawr Avenue Suite 900 Chicago, IL 60631 (773) 380-7900 Jennifer.mitchell@hdrinc.com
--	--

This meeting will be accessible to individuals with disabilities. Anyone needing specific assistance should contact Kelly Sims, HDR Engineering, Inc. at (773) 867-7209 at least three days prior to the hearing.

Kane County Division of Transportation

Randall Road at US 20/Weld Road Study
41W011 Burlington Road
St. Charles, IL 60175

The Kane County Division of Transportation (KDOT) is hosting a public hearing about a proposed improvement to the intersection of Randall Road and US 20/Weld Road (East). To improve traffic flow and increase safety at the intersection, the proposed improvement would close the Weld Road (East) access at Randall Road in order to construct a new entrance ramp from northbound Randall Road to eastbound US 20.

The purpose of the hearing is to receive feedback on the proposed improvement. Attendees may visit at any time between 4 and 7 p.m. to review displays, provide comment, and meet with KDOT and project team representatives. For more information, visit us at <http://www.co.kane.il.us/dot> or contact:

Ms. Bonnie Flock Kane County Division of Transportation 41W011 Burlington Road St. Charles, IL 60048 (630) 584-1170 kdotcomments@co.kane.il.us	Ms. Jennifer Mitchell, P.E. HDR Engineering, Inc. 8550 W. Bryn Mawr Avenue Suite 900 Chicago, IL 60631 (773) 380-7900 Jennifer.mitchell@hdrinc.com
--	--

This meeting will be accessible to individuals with disabilities. Anyone needing specific assistance should contact Kelly Sims, HDR Engineering, Inc. at (773) 867-7209 at least three days prior to the hearing.

Kane County Division of Transportation

Randall Road at US 20/Weld Road Study
41W011 Burlington Road
St. Charles, IL 60175

KANE COUNTY
DIVISION of TRANSPORTATION

Carl Schoedel, P.E.
Director of Transportation
County Engineer



41W011 Burlington Road
St. Charles, IL 60175
Phone: (630) 584-1170
Fax: (630) 584-5265

November 2, 2016

Re: Proposed Randall Road at US 20/Weld Road (East) Intersection Improvement Project

Dear ,

Please join us at an open house public hearing to be held on Tuesday, November 15, 2016 about a proposed improvement to the intersection of Randall Road and US 20/Weld Road (East). To improve traffic flow and increase safety at the intersection, the proposed improvement would close the Weld Road (East) access at Randall Road in order to construct a new entrance ramp from northbound Randall Road to eastbound US 20.

The purpose of the hearing is to receive feedback on the proposed improvement. Attendees may visit at any time between 4 and 7 p.m. to review displays, provide comment, and meet with Kane County Division of Transportation staff and project team representatives. The hearing will be at Elgin Community College, University & Business Center, Room E-106 located at 1700 Spartan Dr. Elgin, IL 60123.

For more information, visit us at <http://www.co.kane.il.us/dot> or contact:

Ms. Bonnie Flock
Kane County Division of Transportation
41W011 Burlington Road
St. Charles, IL 60048
(630) 584-1170
kdotcomments@co.kane.il.us

Ms. Jennifer Mitchell, P.E.
HDR Engineering, Inc.
8550 W. Bryn Mawr Avenue
Suite 900
Chicago, IL 60631
(773) 380-7900
Jennifer.mitchell@hdrinc.com

We hope to see you there.

Regards,

Bonnie Flock
Kane County DOT Project Manager

PADDOCK PUBLICATIONS
P. O. Box 280, Arlington Heights, IL 60006

Daily Herald

CERTIFICATE OF INSERTION

Agency: N/A

Attn: Kelly Sims

Client: HDR

This hereby certifies that the Daily Herald newspaper placed 2 column x 5 inch display ads into our paper on 10/25/16 and 11/08/16 in the Fox Valley Zone supplied by HDR.

Affidavit completed: Date: 12/08/16 Signature: *Tony Marco* Title: Major Retail Account Manager.

Notary Information:

Affirmed before me, this 8th day of December 2016

Alan Musial Commission Expires: 7-2-18

Notary Seal



FM

The last day of the campaign

Trump vows to beat the system, Clinton rallies with Obamas

BY JULIE PACE, LISA LERER AND JILL COLVIN
Associated Press

PHILADELPHIA — Closing out a wildly unpredictable White House race, Hillary Clinton and Donald Trump blitzed through battleground states Monday in a final bid to energize supporters. Clinton, backed by an emotional appeal from Barack Obama, urged voters to embrace a “hopeful, inclusive, bighearted America,” while Trump vowed to “beat the corrupt system.”

The candidates rallied voters late into the night, a frenzied end to a bitter election year that has laid bare the nation’s deep economic and cultural divides. Clinton and Trump were both nostalgic at times, looking back fondly at a campaign that has put each on the brink of the presidency.

Clinton campaigned with confidence, buoyed by FBI Director James Comey’s announcement Sunday that he would not recommend criminal charges against her following a new email review. The FBI inquiry had sapped a surging Clinton momentum at a crucial moment in the race, though she still heads into Election Day with multiple paths to the 270 Electoral College votes needed to become the nation’s first female president.

Clinton closed her campaign alongside the last two Democrats to occupy the Oval Office, Obama and her husband, former President Bill Clinton, as well as first lady Michelle Obama. In a nod to the deep divisions that await the next president, Clinton said she’d come to “regret deeply how angry the tone of the campaign became.” She cast the choice facing voters today as a “test of our time.”

“We know enough about my opponent, we know who he is,” Clinton said, addressing tens of thousands of people sprawled across Philadelphia’s Independence Mall. “The real question for us is what kind of country we want to be.”

Obama’s address amounted to a valedictory for a president whose popularity has grown in his final year in office.

“America, I’m betting on you one more time,” Obama said. “I am betting that tomorrow you will reject fear and choose hope.”

Trump, who sped through five rallies Monday, recalled the rivals he’d vanquished and how far he’s come since launching his improbable candidacy. As he surveyed the crowd in Scranton,



Democratic presidential candidate Hillary Clinton takes the stage with President Barack Obama on Monday at Independence Mall in Philadelphia.



Republican presidential candidate Donald Trump pumps his fist for the crowd Monday after a campaign speech in Sarasota, Fla.

Pennsylvania, he declared, “It’s been a long journey.”

Still, Trump was aggressive to the end, slamming Clinton as the “face of failure.” Having made the new FBI review a centerpiece of his closing case to voters, he argued that the Democrat was being protected by a “totally rigged system.”

“You have one magnificent chance to beat the corrupt system and deliver justice,” Trump said. “Do not let this opportunity slip away.”

The comments were a reminder that Comey’s news, delivered in a letter to lawmakers on Sunday, was a double-edged sword for Clinton. While it vindicated her claims

that the emails would not yield new evidence, it ensured that a controversy that has dogged her campaign from the start would follow her through Election Day.

Across the country, nearly 24 million early ballots were cast under the shadow of Comey’s initial announcement of a new email review. That number represents about half of the nearly 45 million people who had cast votes by Monday, according to Associated Press data.

The inquiry involved material found on a computer belonging to Anthony Weiner, the disgraced former congressman and estranged husband of Huma Abedin, a

longtime Clinton aide. Comey said Sunday the FBI reviewed communications “to or from Hillary Clinton while she was secretary of state.”

Clinton tried to fly above the controversy Monday, making no mention of the FBI during her rallies. She was closing out her campaigning with a midnight rally in Raleigh, North Carolina.

Clinton is banking in part on high turnout — particularly among Obama’s young, diverse coalition of voters — to carry her over the finish line Tuesday. Roughly half the states with advance voting have reported record turnout, including Florida and Nevada, which have booming

Hispanic populations, a possible good sign for Clinton.

In Florida alone, Hispanic participation is up by more than 453,000 votes, nearly doubling the 2012 level. Black turnout is up compared to 2012, but that share of the total vote is lower due to bigger jumps among Latinos and whites, according to University of Florida professor Daniel Smith.

In Nevada, where more than three-fourths of expected ballots have been cast, Democrats also lead, 42 percent to 36 percent.

Trump deputy campaign manager David Bossie downplayed the impact of increased Hispanic participation, telling

reporters on a conference call, “We feel that we’re going to get a good share of those votes.” However, he sidestepped two questions about the level of Hispanic vote Trump needs to win the presidency.

Without victories in Florida and Nevada, Trump’s path to 270 electoral votes would be exceedingly narrow. He already must win nearly all of the roughly dozen battleground states.

Midway through his final day of travel Monday, Trump praised his supporters for having created a “movement.” But he warned it would all slip away if he loses. “Go vote,” he urged. “Or honestly, we’ve all wasted our time.”

PUBLIC HEARING

Randall Road at US 20/Weld Road (East) Intersection Improvement

The Kane County Division of Transportation (KDOT) is hosting a public hearing about a proposed improvement to the intersection of Randall Road and US 20/Weld Road (east). To improve traffic flow and increase safety at the intersection, the Weld Road (east) access will be closed and a new entrance ramp from northbound Randall Road to eastbound US 20 will be constructed.

The purpose of the hearing is to receive feedback on the proposed improvement. Attendees may visit at any time between 4 and 7 p.m. to review displays, provide comment, and meet with KDOT and project team representatives.

For more information, visit us at <http://www.co.kane.il.us/dot> or contact:

Ms. Bonnie Flock
Kane County Division of Transportation
41W011 Burlington Road
St. Charles, IL 60048
(630) 584-1170
flockbonnie@co.kane.il.us

Ms. Jennifer Mitchell, P.E.
HDR Engineering, Inc.
8550 W. Bryn Mawr Avenue
Suite 900
Chicago, IL 60631
(773) 867-7225
jennifer.mitchell@hdrinc.com

This meeting will be accessible to individuals with disabilities. Anyone needing specific assistance should contact Kelly Sims, HDR Engineering, Inc. at (773) 867-7209 at least three days prior to the hearing.

Tuesday,
November 15, 2016
4:00 PM to 7:00 PM
Elgin Community College
University & Business Center, Room E-106
1700 Spartan Dr.
Elgin, IL 60123

Plumbing Problems? Sewer Problems? Drain Trouble?

AB & Sons

Plumbing & Sewer Inc.

- FREE Second Opinions
- Lifetime Warranties
- Senior/Veteran Discounts
- FREE Estimates
- Licensed-Bonded-Insured
- Over 50 Years' Experience

We Will Meet or Beat Any Comparable Written Estimate

847-729-3333 | 630-834-3333
815-759-8888 | 708-485-9999

We camera inspect your plumbing, sewer & basement drain tile systems before digging, then by hydrojetting we are able to blast through blockages saving you \$\$\$\$thousands!

<p>\$100 Off Any Job of \$750 Or More</p> <p>or</p> <p>10% Off Any Job of \$2500 Or More</p> <p>AB & Sons</p>	<p>INSTALLED Starting at \$275 Sump Pumps</p> <p>or</p> <p>Starting at \$475 Ejector Pumps</p> <p>AB & Sons</p>	<p>Starting at \$50 Drain Cleaning</p> <p>PLUS Video Inspection (If necessary SBI Savings)</p> <p>1-Year Guarantee Rodding & 1 FREE Re-Rod</p> <p>AB & Sons</p>
---	--	---

With this coupon. Not valid with other offers or prior purchases.

SAVE \$1250
On a New Bath or Shower

New orders only. Minimum purchase required. Cannot be combined with any other offer. Other restrictions may apply.

One Day Is All It Takes!

Receive a **FREE \$200 Gift Card** with a Bath or Shower Purchase.

New orders only. Minimum purchase required. Cannot be combined with any other offer. Other restrictions may apply.

This Could Be Your Bathroom By This Time TONIGHT!

TIGER BATH SOLUTIONS

Call Today!
800-432-4615

www.tigerbath.com

DOUBLE SAVINGS SALE!

SAVE \$500 \$1000
On New Windows!

Senior & Military Discounts

Ask About 12 Months Same As Cash!
With minimum purchase and approved credit.

ACT NOW! Offer Expires 11/30/2016

For Windows as Unique as You

To own windows that are effectively insulated and beautiful, look no further than Window Works. Our residential windows offer a number of advantages over standard single pane glass windows, and will provide you with decades of lasting quality. All of our windows come with a lifetime warranty, ensuring that you will have a quality product for many years after installation.

WINDOW WORKS

Quality Windows and Siding... Made Easy!

CALL TODAY!
800-771-5316

www.MyWindowWorks.com

Save **\$3000**
on a New Bathroom or Kitchen remodel!

Flexible Payment Plans!

HOMEWERKS

(800) 687-1094

Transforming Chicagoland Homes Since 1996!

www.myhomewerks.com

FM

1945 war hero's kid brother going back to World Series



BURT CONSTABLE

FROM TINKER TO BECKERT TO RIZZO

As the 9-year-old kid brother of World War II hero John Pellettiere, Dan Pellettiere Jr. understood the significance of his Chicago Cubs moment with his father and brother in 1945. Using both hands, the young boy held his 1945 World Series tickets tucked under his chin and gazed up at his dad's camera for the black-and-white photograph.

This weekend, Pellettiere, 80, can re-enact that World Series photo at Wrigley Field with his long-dead brother's son from Long Grove and three generations of Pellettieres.

"It's my mission, my goal, to get Dan back to the World Series and to do it with my two sons, John and Joe," says 66-year-old John Pellettiere Jr., a Cubs season-ticket holder and the son of the war hero who died in 1980 of heart problems at age 62. "The Cubs in the World Series means the world to our family. Hopefully, the tradition will continue, and John and Joe will get to take their kids to a World Series game at Wrigley."

It's been a nostalgic journey from 1945 to the 2016 World Series for Dan Pellettiere. Taking a few deep breaths and wiping tears from the corners of his eyes, the Palatine man remembers the emotions of the 1945 World Series, starting with the train ride to Wrigley.

"That in itself was a big deal, riding with my dad and my brother, two of my heroes," he says.

His brother, John, joined the Army as a young man and served with the U.S. Cavalry. He was patrolling the Mexican border on a horse that he named "Little Dan" when the Dec. 7, 1941, attack on Pearl Harbor brought the U.S. into World War II. John Pellettiere, 18 years older than his brother, became a tank commander during the war. He almost died on his first day in France when a mine blew up his tank and killed the soldier next to him.

Nicknamed "Porky," the 138-pound Pellettiere rose through the ranks to become commander with the 712th Tank Battalion. Seeing combat daily as he moved through France, Pellettiere fought in the Battle of the Bulge and rolled through Germany and Czechoslovakia.

Wounded twice, he earned two Purple Hearts, two Bronze Star Medals for "heroic achievement" and a Silver Star Medal when he dodged enemy fire on foot while leading his tanks to a successful surprise attack on the enemy in Germany. He didn't talk much about the war, but he did mail home some letters and souvenirs.

"I remember when the shrapnel came home. It was wrapped up in gauze. It was bloody," Dan Pellettiere remembers. When his brother returned to their neighborhood on the West Side of Chicago in the summer of 1945, people appreciated his sacrifices and knew he was a big Cubs fan.

"Family lore has it that the neighbors helped him because he was a war hero, but somebody came up with three tickets (to each game in Chicago)," John Pellettiere Jr. says. So the veteran, his dad and his brother headed to Wrigley.

"I remember the smell of cigars and the beer, and that my dad wore a coat and tie," says Dan Pellettiere, who still has the bat that his favorite



MARK WELSH/mwesh@daillyherald.com

The Chicago Cubs are just another member of the family for the Pellettiere clan. Three generations of Pellettieres, from left, John Jr., his sons, Joe and John III, and Dan Pellettiere, are going to Game 4 at Wrigley Field, where Dan remembers watching the 1945 World Series.



MARK WELSH/mwesh@daillyherald.com

Clutching his 1945 World Series tickets, 9-year-old Dan Pellettiere Jr. went to games at Wrigley Field with his father, Dan Sr.

Watch the video

Celebrating the Cubs' first trip to the World Series since 1945, fan Dan Pellettiere of Palatine unfolds a photo of his late brother, John, in the Wrigley Field stands. See the moment at daillyherald.com/more.

player, Cubs great Andy Pafo, gave him after one regular season game. He got out of school on a Wednesday for the climactic World Series Game 7 against the Detroit Tigers.

"I know my hero did well," Dan Pellettiere says, recalling how Pafo, the Cubs center fielder, hit a triple and drove in one of the Cubs' runs in a 9-3 loss. "I was distraught that the Cubs didn't win, and I've carried that distraughtness with me the whole time."

That changed a bit on Saturday night when Dan Pellettiere and family members watched the Cubs win the National League pennant in Wrigley. John Pellettiere Jr. whipped out his phone and recorded his Uncle Dan, who brought a photo of his late brother to the game. "He reached into his pocket,

unfolded the picture, and held it up to the sky," John Pellettiere Jr. says.

The late soldier's widow, Marie, is 95 years old and watches every game on TV. A die-hard Cubs fan, as is everyone in the Pellettiere family, she is so happy that her Cubs finally are in the World Series instead of "those pesky Redbirds," says her son.

As emotional as a World Series game at Wrigley will be, the Pellettieres, who have tickets to Game 4, aren't going to spend much time talking about the 71-year sentimental journey that landed them at Wrigley for another World Series.

"Not during the game," Dan Pellettiere says. "We're heavily into the game."

bconstable@daillyherald.com

Join the conversation.
 Twitter: @daillyherald
 Facebook: daillyheraldfans
 Instagram: @thedaillyherald

PUBLIC HEARING
 Randall Road at US 20/Weld Road (East)
 Intersection Improvement

The Kane County Division of Transportation (KDOT) is hosting a public hearing about a proposed improvement to the intersection of Randall Road and US 20/Weld Road (east). To improve traffic flow and increase safety at the intersection, the Weld Road (east) access will be closed and a new entrance ramp from northbound Randall Road to eastbound US 20 will be constructed.

Tuesday,
November 15, 2016
 4:00 PM to 7:00 PM

Elgin Community College
 University & Business Center, Room E-106
 1700 Spartan Dr.
 Elgin, IL 60123

The purpose of the hearing is to receive feedback on the proposed improvement. Attendees may visit at any time between 4 and 7 p.m. to review displays, provide comment, and meet with KDOT and project team representatives.

For more information, visit us at <http://www.co.kane.il.us/dot> or contact:

Ms. Bonnie Flock
 Kane County Division of Transportation
 41W011 Burlington Road
 St. Charles, IL 60048
 (630) 584-1170
flockbonnie@co.kane.il.us

Ms. Jennifer Mitchell, P.E.
 HDR Engineering, Inc.
 8550 W. Bryn Mawr Avenue
 Suite 900
 Chicago, IL 60631
 (773) 867-7225
jennifer.mitchell@hdrinc.com

This meeting will be accessible to individuals with disabilities. Anyone needing specific assistance should contact Kelly Sims, HDR Engineering, Inc. at (773) 867-7209 at least three days prior to the hearing.

STEM CELL
 INSTITUTE OF AMERICA

FREE Educational Seminars

STOP THE PAIN!
 Get Relief without Surgery!

Do you SUFFER from...

- Knee Pain
- Lower Back Pain
- Shoulder Pain
- Neuropathy
- Joint Pain
- Plantar Fasciitis
- Osteoarthritis
- Neck Pain
- Tennis Elbow

Find Out if Regenerative Medicine is Right for You!

SAFE • ETHICAL • EFFECTIVE

Regenerative medicine is now available locally and can effectively reduce and even eliminate your pain without surgery or addictive medications. Regenerative medicine uses amniotic tissue cells to regenerate and repair tissues in your body that are damaged due to injury, age, disease, and defects. Stem cells have the power to go to these damaged areas, generate new cells and rebuild the area.

Naperville

November 3rd at 12:30

November 3rd at 6:30

Crystal Lake

November 8th at 1:00

November 8th at 6:30

Northbrook

November 10th at 1:00

November 10th at 6:30

Geneva

November 10th at 12:30

November 10th at 6:30

It worked for me, it can work for you!

Hub Arkush

Elgin

November 10th at 12:00

November 10th at 6:30

Huntley

November 10th at 1:00

November 10th at 5:30

Schaumburg

November 14th at 12:00

November 14th at 3:00

November 14th at 6:30

Gurnee

November 15th at 1:00

November 15th at 6:30

Reservations Required

CALL TODAY

866-577-4678

Seating is Limited

For More Information Visit:

ChicagoLandMedical.com/Seminars

KANE COUNTY

DIVISION of TRANSPORTATION

Carl Schoedel, P.E.
Director of Transportation
County Engineer



41W011 Burlington Road
St. Charles, IL 60175
Phone: (630) 584-1170
Fax: (630) 584-5265

FOR IMMEDIATE RELEASE

CONTACT: Bonnie Flock, (630) 584-1170

November 14, 2016

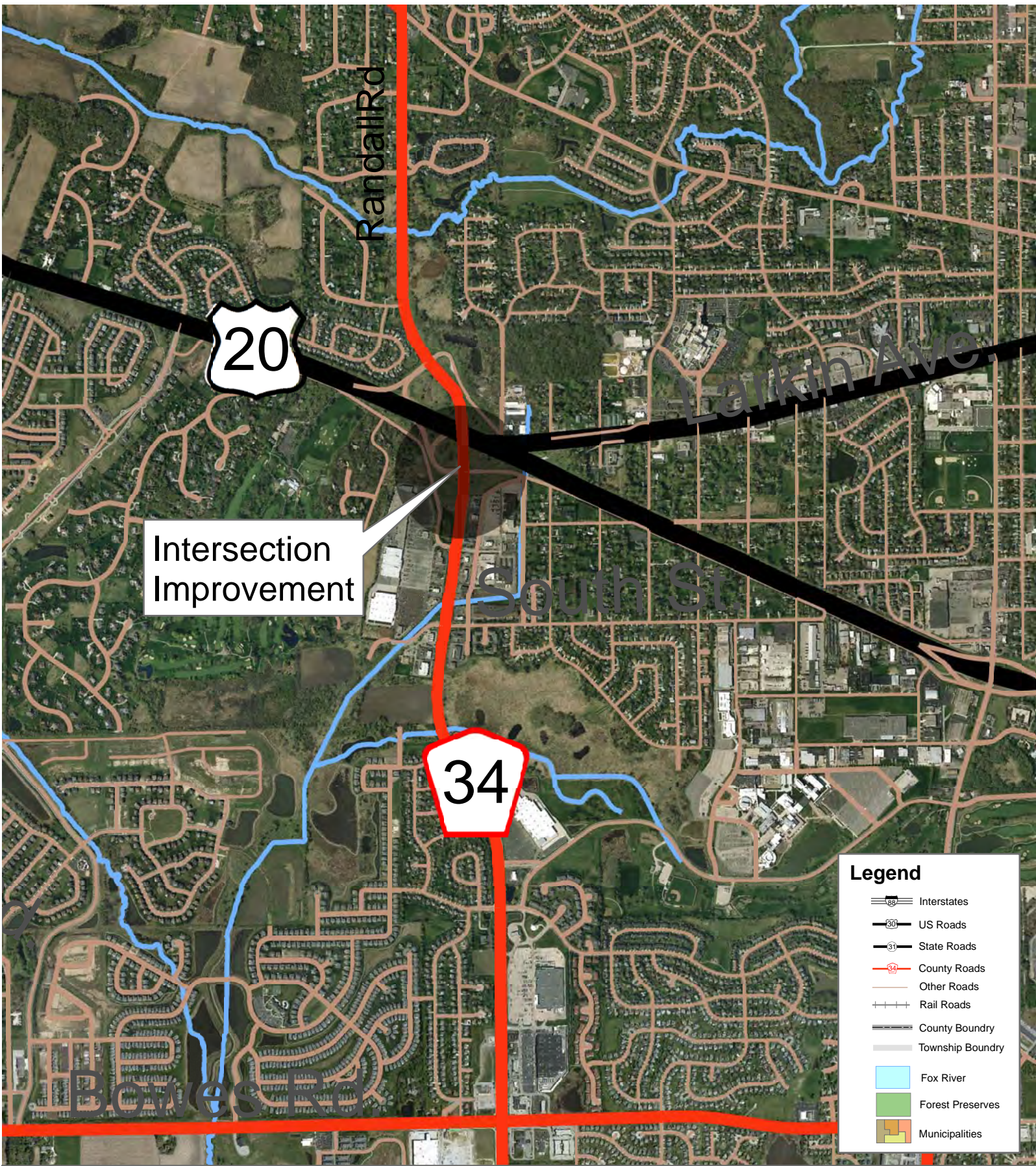
Kane County Asking for Public's Input on Improvements to Intersection of Randall Road and Weld Road

Public Open House and Hearing to be Held Tuesday Night, November 15, 2016

St. Charles, IL – Kane County Division of Transportation wants to make travel through the intersection of Randall Road and Weld Road (East) safer and more efficient. By closing Weld Road (East) and constructing free flow right turns to access eastbound US 20 from both northbound and southbound Randall Road, drivers will experience less delay and the potential for crashes will be reduced.

As the Kane County Division of Transportation develops a project development report to evaluate potential environmental impacts and benefits of constructing improvements, it is holding a public Open House and Hearing to get your opinions about the project. The Open House and Hearing will be held on Tuesday, November 15, 2016 at Elgin Community College, University & Business Center, Room E-106 located at 1700 Spartan Dr. Elgin, IL 60123. Attendees may visit at any time between 4 and 7 p.m. to review displays, provide comment, and meet with Kane County Division of Transportation staff and project team representatives.

###

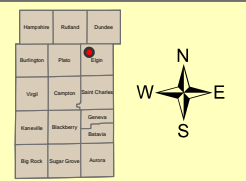
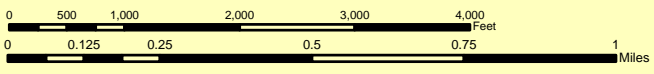


Intersection Improvement

Legend

- Interstates
- US Roads
- State Roads
- County Roads
- Other Roads
- Rail Roads
- County Boundry
- Township Boundry
- Fox River
- Forest Preserves
- Municipalities

Section Number 14-00446-00-CH
 Randall Road at Weld Road
 Intersection Improvement





Appendix B. Sign-In Sheets



PUBLIC SIGN-IN SHEET

Randall Road at US 20/Weld Road (East) Intersection Improvement

Meeting Date: November 15, 2016
Elgin, IL

#	Name (First and Last)	Organization	Address	Email
1	WILLIAM WERST	CPM ITA		
2	RUTH WERST			
3	CURTIS WALK			
4	Parker Thompson	Elgin Bike Hub		
5	Sheila Hawkins			
6	JOHN O'Shea	A CL STORAGE		
7	Kurt Eselman			
8	Joe Kar Kusiewicz	US 20 Bypass Committee		
9	Patrick Knapp	Kane Kendall Council of Mayors		
10	Kurt Smith +1			
11	Linda Kennedy +1			
12	NEAL BILYK			
13	Gloria Casas	Courier News		
14	Dennis H Hecker	Public		
15	TIM BLAZIER			

Completion of this sign-in sheet is voluntary and helps the study team keep an accurate record of meeting attendance. Under the Freedom of Information Act, any identifying information provided above will become part of the public record and, as such, must be released to any individual upon request.

This meeting is going to be photographed. I give HDR, Inc., its collaborators, assigns, successors in interest, and legal representatives permission to use my picture in all forms and in all media, without restrictions as to changes or alterations for advertising, trade, promotion, exhibition or any other purpose. I also waive any right to inspect or approve the photograph(s), including written copy that may be created and appear in connection with the image(s). I understand that HDR owns the copyright in these photographs and I waive any claims I may have based on any usage of the photographs, including but not limited to claims for either invasion of privacy or libel. I agree that this release is binding on me, my legal representatives, heirs, and assigns. I have read this release and am fully familiar with its terms and contents.



PUBLIC SIGN-IN SHEET

Randall Road at US 20/Weld Road (East) Intersection Improvement

Meeting Date: November 15, 2016
Elgin, IL

#	Name (First and Last)	Organization	Address	Email
1	FRED FRANKLIN			
2	LINDA S. NARVAIZ			
3	Monica Merhaut			
4	WALT HOLLENDER			
5	Ezekiel Guza	Pace Bus		
6	Sandy Bilyk			
7	STUART SWANSON			
8	Colleen Kapann			
9	Susan + Arthur Tyrrel		res	
10	Judith A. Schroeder	Resident		
11	Robert S. Schroeder	RESIDENT		
12	Samy M Amiri	RESIDENT		
13	Raymond Rosta	Resident		
14	Dave Wong	Resident		
15	Mark R. Ostrander-Karen	Resident		

Completion of this sign-in sheet is voluntary and helps the study team keep an accurate record of meeting attendance. Under the Freedom of Information Act, any identifying information provided above will become part of the public record and, as such, must be released to any individual upon request.

This meeting is going to be photographed. I give HDR, Inc., its collaborators, assigns, successors in interest, and legal representatives permission to use my picture in all forms and in all media, without restrictions as to changes or alterations for advertising, trade, promotion, exhibition or any other purpose. I also waive any right to inspect or approve the photograph(s), including written copy that may be created and appear in connection with the image(s). I understand that HDR owns the copyright in these photographs and I waive any claims I may have based on any usage of the photographs, including but not limited to claims for either invasion of privacy or libel. I agree that this release is binding on me, my legal representatives, heirs, and assigns. I have read this release and am fully familiar with its terms and contents.



PUBLIC SIGN-IN SHEET

Randall Road at US 20/Weld Road (East) Intersection Improvement

Meeting Date: November 15, 2016
Elgin, IL

#	Name (First and Last)	Organization	Address	Email
1	John Geavaras			
2	Maureen Chovanek			
3	Jack Ottinger			
4	Julia Jindra			
5	PATRICK GIESKE			
6	Jeannine + Lee Pisarczyk			
7	Jeff + Lisa Childs			
8	Michael Metz			
9	ELISE DRUMM / BOB DRUMM			
10	Marilyn Solomon	IDOT		
11	Tom JOHANNSEN	FCB		
12	Beth Warren			
13				
14				
15				

Completion of this sign-in sheet is voluntary and helps the study team keep an accurate record of meeting attendance. Under the Freedom of Information Act, any identifying information provided above will become part of the public record and, as such, must be released to any individual upon request.

This meeting is going to be photographed. I give HDR, Inc., its collaborators, assigns, successors in interest, and legal representatives permission to use my picture in all forms and in all media, without restrictions as to changes or alterations for advertising, trade, promotion, exhibition or any other purpose. I also waive any right to inspect or approve the photograph(s), including written copy that may be created and appear in connection with the image(s). I understand that HDR owns the copyright in these photographs and I waive any claims I may have based on any usage of the photographs, including but not limited to claims for either invasion of privacy or libel. I agree that this release is binding on me, my legal representatives, heirs, and assigns. I have read this release and am fully familiar with its terms and contents.







Appendix C. Presentation and Display Boards

KDOT is completing a Project Development Report in support of a Categorical Exclusion under the National Environmental Policy Act (NEPA). This report includes reviewing existing conditions and potential impacts to the following environmental resources.

- » There are no cultural resources or historic properties, structures, and districts in the study area.
- » Impacts to wetlands are limited to a small section of roadside ditches; Mitigation is not required for these types of wetlands.
- » There are no threatened and endangered species in the study area.
- » Predicted noise level changes are not significant; modeling shows change in noise levels would occur near undeveloped land.
- » There are no special waste sites identified within construction limits.
- » Seven linear feet of temporary easement will be necessary for grading and drainage work along Randall Road near IHOP.

How do I comment?

Formal commenting period is open through **December 2, 2016**. Please provide your comments by:

-  Filling out a comment form today;
-  Offering your verbal comments to the Court Reporter today;
-  Emailing your comments to: **kdotcomments@co.kane.il.us**; or
-  Mailing your comments to:

Ms. Bonnie Flock
Kane County
Division of Transportation
41W011 Burlington Road
St. Charles, IL 60048



Randall Road at US 20/Weld Road (East) Intersection Improvement

Public Hearing
November 15, 2016

Welcome!

The purpose of this hearing is to receive feedback on the proposed improvement to the intersection of Randall Road at US 20/Weld Road (East). Please visit the exhibit stations, view traffic simulations, ask staff questions, and offer feedback.

Kane County Division of Transportation (KDOT) is conducting an Engineering and Environmental Study of the Randall Road at US 20/Weld Road (East) intersection in Elgin. The Study includes the intersection and approaches, which include the eastbound US 20 exit and entrance ramp and Weld Road (East).

Why are we studying this intersection?

Safety

There are three safety concerns at the intersection that increase the potential for rear-end crashes.

1. The northbound left turn lane queue backs up into through traffic.
2. The southbound Randall Road right turn to US 20 cannot access the right turn lane from long through traffic queues.
3. The left turn and side street approaches do not have sufficient signal time allocated, resulting in aggressive driving.

Traffic Delays

Randall Road serves over 50,000 cars every day. The connected signal system is programmed to prioritize north-south through traffic on Randall Road, resulting in extensive delays for motorists making turns and waiting on side streets.

What improvements are being considered?

Three alternatives are being reviewed as part of the Study:

1. No-Build Alternative with existing geometrics
2. Dual Left Turn Alternative with traditional widening for additional turn lanes
3. Free Flow Entrance Alternative with a new entrance ramp from northbound Randall Road to eastbound US 20. This Alternative would close Weld Road (East) and is supported by Illinois Department of Transportation and U.S. Federal Highway Administration.

The **Free Flow Entrance Alternative** is the only alternative considered that significantly reduces congestion and improves safety and is favored as the Preferred Alternative.

What are the goals of the project?

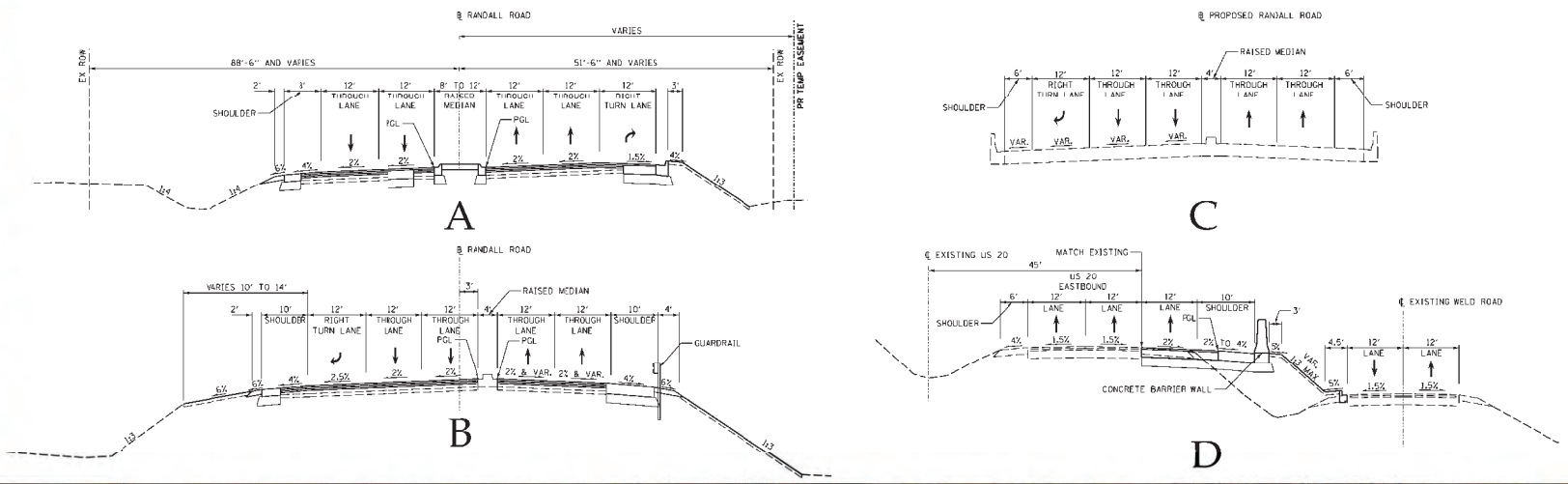
As Kane County's population continues to grow, congestion at this intersection is expected to worsen. The goals and objectives of this project are to:

- » Improve safety through reduced congestion and vehicle conflict points
- » Reduce existing and future congestion and traffic delays

Process, Funding, and Next Steps



RANDALL ROAD AT WELD ROAD INTERSECTION IMPROVEMENT FREE FLOW RIGHT TO US 20 (PREFERRED ALTERNATIVE)



Legend

- Existing Right-Of-Way
- Existing Traffic Signal
- Pavement Removal
- Proposed Raised Median
- Proposed Shoulder
- Proposed Temporary Easement
- Proposed Curb and Gutter
- Wetland

0 100 200 300
SCALE IN FEET

What would happen with the Free Flow Entrance Alternative?

- » Weld Road (East) would be closed
- » Free flow right turn entrance ramps to eastbound US 20 would be created from northbound and southbound Randall Road, eliminating left turns to access eastbound US 20
- » More than a dozen conflict points would be removed, reducing the potential for crashes and increasing safety



Welcome

Public Hearing
Open House
4 p.m. to 7 p.m.

Please sign in.

Randall Road at US 20/Weld Road (East) Intersection Improvement

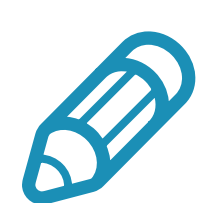


What is this Public Hearing about?

The purpose of this hearing is to receive feedback on the proposed improvement to the intersection of Randall Road at US 20/Weld Road (East). Please visit the exhibit stations, view traffic simulations, ask staff questions, and offer feedback.

How do I comment?

Formal commenting period is open through **December 2, 2016**. Please provide your comments by:



Filling out a comment form today;



Offering your verbal comments to the Court Reporter today;



Emailing your comments to: kdotcomments@co.kane.il.us; or



Mailing your comments to: Ms. Bonnie Flock
Kane County
Division of Transportation
41W011 Burlington Road
St. Charles, IL 60048



Randall Road at US 20/Weld Road (East) Intersection Improvement

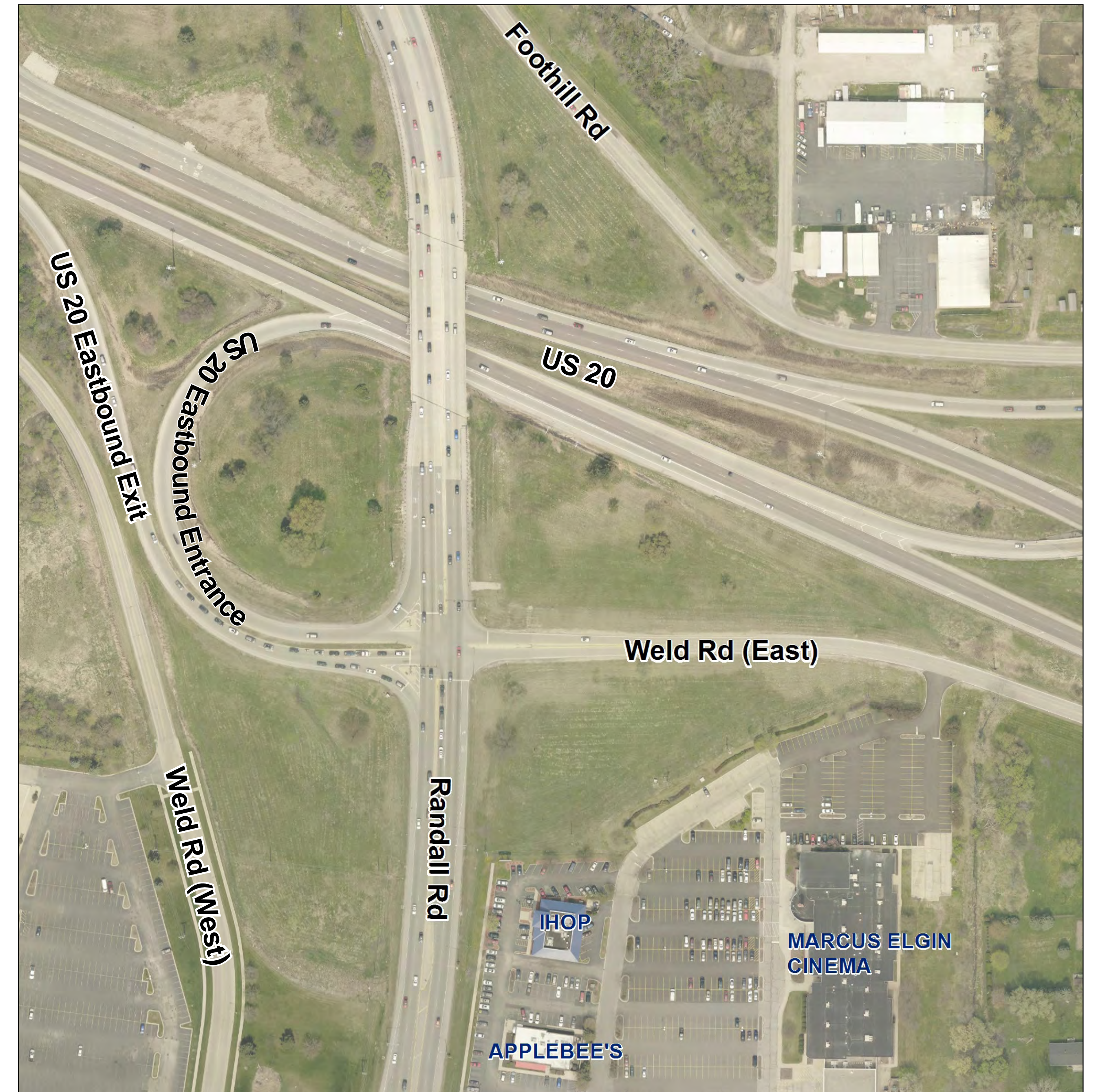


What is the Randall Road at US 20/Weld Road (East) Study?

Kane County Division of Transportation (KDOT) is conducting an Engineering and Environmental Study of the Randall Road at US 20/Weld Road (East) intersection in Elgin. The Study includes the intersection and approaches, which include the eastbound US 20 exit and entrance ramp and Weld Road (East).

Who is completing the study?

- » KDOT is the project sponsor and has jurisdiction over Randall Road.
- » Illinois Department of Transportation (IDOT) has jurisdiction over US 20/Weld Road and is reviewing the project design.
- » HDR Engineering, Inc. is the consultant retained to complete the Engineering and Environmental Study for the project.



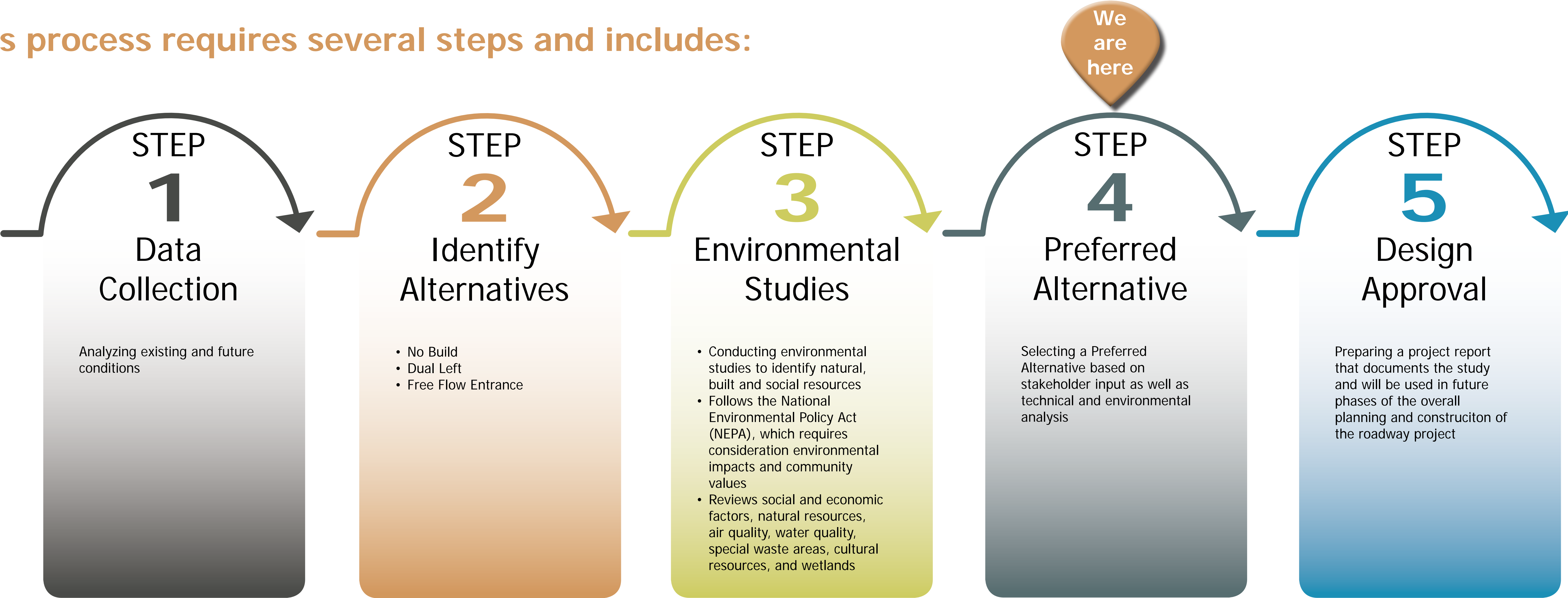
Randall Road at US 20/Weld Road (East) Intersection Improvement



What is the study process?

The Randall Road at US 20/Weld Road Study is a Phase I Engineering Study, also referred to as a Preliminary Engineering and Environmental Study.

This process requires several steps and includes:



Randall Road at US 20/Weld Road (East) Intersection Improvement

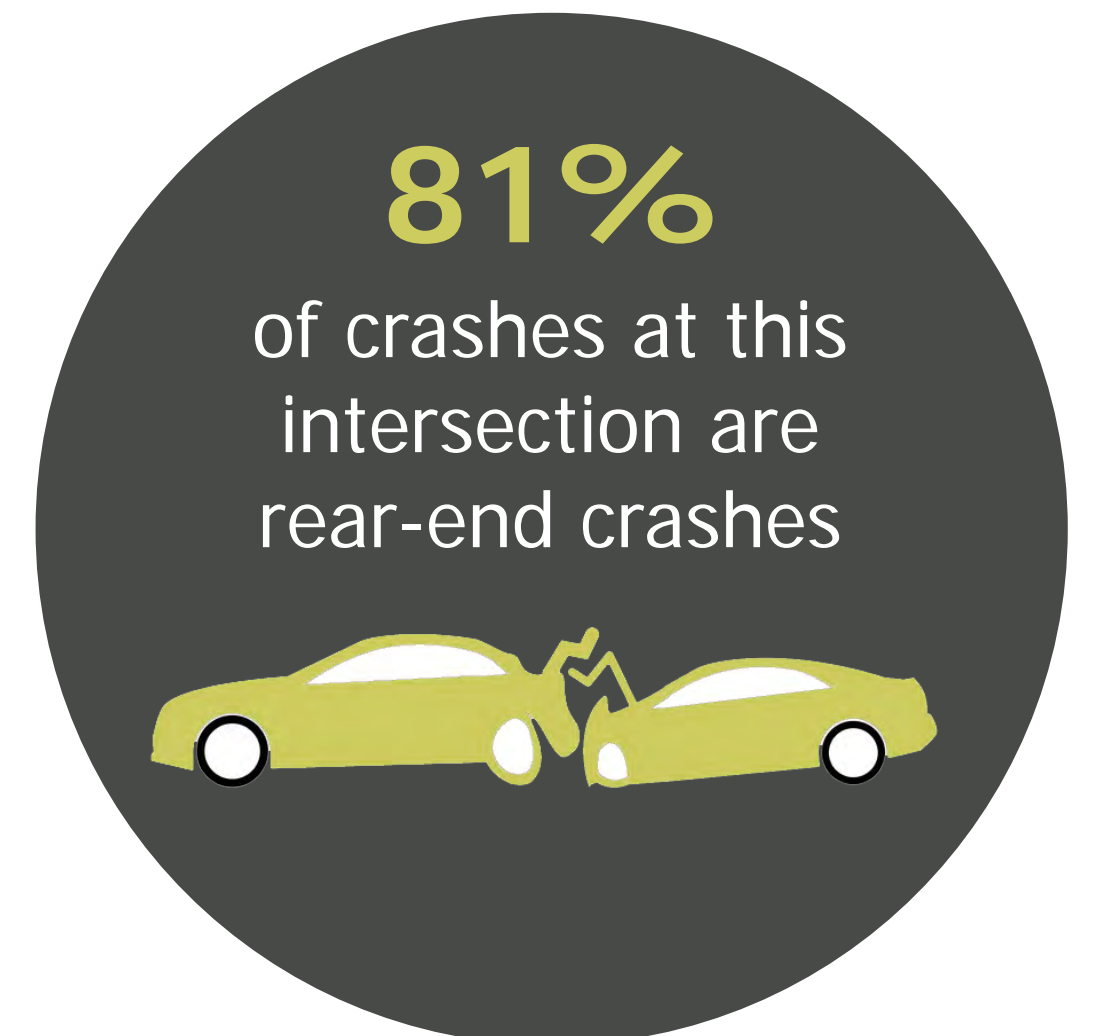


Why are we studying this intersection?

Safety

There are three safety concerns at the intersection that increase the potential for rear-end crashes.

1. The northbound left turn lane queue backs up into through traffic.
2. The southbound Randall Road right turn to US 20 cannot access the right turn lane from long through traffic queues.
3. The left turn and side street approaches do not have sufficient signal time allocated, resulting in aggressive driving.

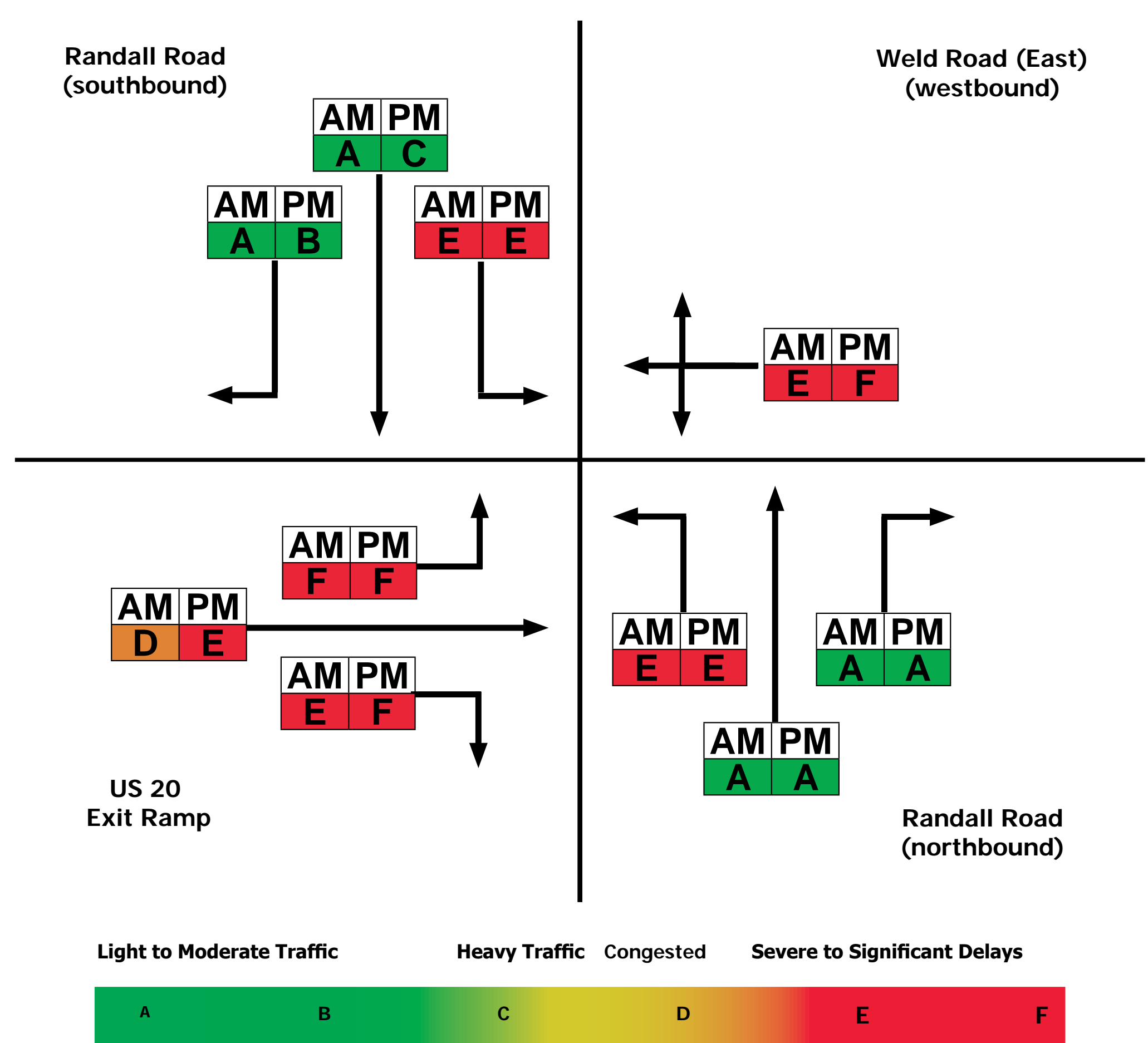


Traffic Delays

Randall Road serves over 50,000 cars every day. The connected signal system is programmed to prioritize north-south through traffic on Randall Road, resulting in extensive delays for motorists making turns and waiting on side streets.

Traffic congestion is measured by time of delay, or Level of Service (LOS), for existing or future traffic. LOS is expressed using letters A through F, with A representing no delay and F representing significant delay.

Existing Level of Service



What are the project's goals?

As Kane County's population continues to grow, congestion at this intersection is expected to worsen. The goals and objectives of this project are to:

- » Improve safety through reduced congestion and vehicle conflict points
- » Reduce existing and future congestion and traffic delays

Randall Road at US 20/Weld Road (East) Intersection Improvement



What improvements are being considered?

	Level of Service in 2040	Safety
<h3>No Build Alternative</h3> <ul style="list-style-type: none"> » No changes to intersection. 		<ul style="list-style-type: none"> » Signal would continue to have left turn phases. » No additional time would be added to left turn or side street signal phases. » Crash rates would continue to rise as congestion increases.
<h3>Dual Left Alternative</h3> <ul style="list-style-type: none"> » Dual northbound left turn lanes » Right and left turn lanes on Weld Road (East) » Widened eastbound US 20 entrance ramp 		<ul style="list-style-type: none"> » New safety concerns on the entrance ramp to eastbound US 20 with three lanes merging into one lane. » Signal would continue to have left turn phases, with priority given to through traffic. » Crash rates would be expected to rise as congestion increases.
<h3>Free Flow Entrance Alternative</h3> <ul style="list-style-type: none"> » Close Weld Road (East) » Free flow right turn entrance ramps to eastbound US 20 from northbound and southbound Randall Road 		<ul style="list-style-type: none"> » Left turn green time can be assigned to the side street with no impact to through traffic, reducing the potential for crashes. » More than a dozen conflict points will be removed, reducing the potential for crashes and increasing safety.



Randall Road at US 20/Weld Road (East) Intersection Improvement



What are possible alternative routes between Randall Road, McLean Boulevard, and US 20?



Randall Road at US 20/Weld Road (East) Intersection Improvement



How might this project affect the environment?

Kane County Division of Transportation is completing a Project Development Report in support of a Categorical Exclusion under the National Environmental Policy Act (NEPA). This report includes reviewing existing conditions and potential impacts to environmental resources.

- » There are no **cultural resources or historic properties, structures, and districts** in the study area.
- » Impacts to **wetlands** are limited to a small section of roadside ditches; Mitigation is not required for these types of wetlands.
- » There are no **threatened and endangered species** in the study area.
- » Predicted **noise** level changes are not significant; modeling shows change in noise levels would occur near undeveloped land.
- » There are no **special waste sites** identified within construction limits.
- » Seven linear feet of **temporary easement** will be necessary for grading and drainage work along Randall Road near IHOP.



Randall Road at US 20/Weld Road (East) Intersection Improvement



What are the next steps?





Appendix D. Written Comments



COMMENT FORM

Randall Road at US 20/Weld Road (East) Intersection Improvement

Comment Date: 11/15/16

Please turn this form in tonight or mail to the address provided on the back (use additional sheets as necessary). You may also submit your comments to kdotcomments@co.kane.il.us. Please submit your comments by December 2, 2016.

I live on South St & Hawthorne. Shutting down Weld Road will increase South St. TRAFFIC for ECC & Industrial area. I would be interested in 24 hour surveillance counts of truck traffic currently on Weld, as well as South St. The existing weld rd trucks will be forced to use South Street to access industrial area.

Name:	Monica Menhaut				
Organization:					
Address:	2201 South St				
City:	Elgin	State:	IL	Zip:	60123
Email:					



COMMENT FORM

Randall Road at US 20/Weld Road (East) Intersection Improvement

Comment Date: 11-15-16

Please turn this form in tonight or mail to the address provided on the back (use additional sheets as necessary). You may also submit your comments to kdotcomments@co.kane.il.us. Please submit your comments by December 2, 2016.

Please do a 24 hr survey count of trucks using Weld & South St. How much will truck traffic increase on South St if Weld is closed.

Is a pedestrian bridge needed to cross Randall at South Street

Name:	Sheila Hawkins		
Organization:			
Address:	10014 Hawthorne		
City:	State:	Zip:	
Email:			



COMMENT FORM

Randall Road at US 20/Weld Road (East) Intersection Improvement

Comment Date: 11-15-16

Please turn this form in tonight or mail to the address provided on the back (use additional sheets as necessary). You may also submit your comments to kdotcomments@co.kane.il.us. Please submit your comments by December 2, 2016.

My concern with this project is that the problem trying to be addressed will just be moved south to South St. There is a lot of traffic on eastbound Weld Road that will be diverted to South St. All the truck traffic for Rite Aid and Conway will be forced onto South St. Also the church on Weld & Airline will force much more traffic onto residential side streets that lead to the church. There is one congregation that meets there that is based out of Crystal Lake. Also there are two home based daycares on Airline that don't need additional traffic. I feel much of the congestion could be better served by improvement of the football access to Airline and Parkin Ave and a better access road to ECC from Randall Road instead of the gory turns now required to get there.

Name:	STUART SWANSON				
Organization:					
Address:	36W300 South St.				
City:	Elgin	State:	IL	Zip:	60123
Email:	STUART.SWANSON@COMCAST.NET				

Stuart Swanson South St.



COMMENT FORM

Randall Road at US 20/Weld Road (East) Intersection Improvement

Comment Date: 11-15-17

Please turn this form in tonight or mail to the address provided on the back (use additional sheets as necessary). You may also submit your comments to kdotcomments@co.kane.il.us. Please submit your comments by December 2, 2016.

CONCERNED ABOUT INCREASED TRUCK & CAR TRAFFIC ON
South - All ready have problems with speeding & reckless
drivers. House shakes & drywall creaking from trucks at all
hours problem has also seemed to INCREASED since the opening
of South Street Ext. At Randall Rd.

Name:	FRED FRANKLIN				
Organization:					
Address:	2027 South St				
City:	Elgin	State:	IL	Zip:	60120
Email:					



COMMENT FORM

Randall Road at US 20/Weld Road (East) Intersection Improvement

Comment Date: 11-15-16

Please turn this form in tonight or mail to the address provided on the back (use additional sheets as necessary). You may also submit your comments to kdotcomments@co.kane.il.us. Please submit your comments by December 2, 2016.

CONCERNS increase of more traffic on South Street
MORE CARS speeding
more TRUCK TRAFFIC (INCREASE)

RIGHT NOW if WALKING WE CAN NOT EVEN CROSS
RANDALL ROAD SAFETY

Consider other options (Chokeleaf or a ROAD
from Weld to 20)

Since the opening of south street extension
already it has been bad even trying to get in
& out of our driveway.

Name:	LINDA S. NARVAIZ			
Organization:				
Address:	2027 South St.			
City:	Elgin, Il. 60123-6941	State:	IL	Zip: 60123-6941
Email:				



COMMENT FORM

Randall Road at US 20/Weld Road (East) Intersection Improvement

Comment Date: 11-15-16

Please turn this form in tonight or mail to the address provided on the back (use additional sheets as necessary). You may also submit your comments to kdotcomments@co.kane.il.us. Please submit your comments by December 2, 2016.

The primary proposal is interesting and will alleviate a number of problems for traffic on Randall. The 2040 plans for Randall also have additional lanes planned. Part of plan needs to be considered for the traffic flow and how it will affect the entrance & exit ramps being considered now.

Closing off Weld Rd will shift traffic flow into a residential area that will have more access problems from residents & side streets. The county has not addressed pedestrian & cycling issues into or out of the neighborhood. Randall is a major problem.

Emergency services will take longer to get to properties north of South street

Businesses on Weld Rd between South St & Shepherd Dr may suffer from lower traffic flow & ease of customer getting to their businesses.

Name:	WILLIAM WRAS				
Organization:	CPMHA				
Address:	2245 SOUTH ST				
City:	ELGIN	State:	IL	Zip:	60123
Email:	WRW543@YAHOO.COM				



COMMENT FORM

Randall Road at US 20/Weld Road (East) Intersection Improvement

Comment Date: 11-15-16

Please turn this form in tonight or mail to the address provided on the back (use additional sheets as necessary). You may also submit your comments to kdotcomments@co.kane.il.us. Please submit your comments by December 2, 2016.

As a resident who lives on South Street, I have several concerns about what this means for traffic in a residential area. Cutting off Weld Rd. would only leave South St. as an entrance/exit for residents. This would mean all the traffic coming from the North and due west that is now split between Weld & South would now go ~~through~~^{on} South only to commercial businesses (trucks) and ECC (students). Students are often in a rush to get to classes on time or getting away after classes.

When there is an accident at a major intersection on Randall — we need another main entrance/exit.

The movie theater also gets a lot of traffic. I cannot imagine what taking their main entrance/exit from Randall would do to traffic. The other commercial streets around the fast food restaurants could not handle more traffic.

Name:	Ruth Werst				
Organization:					
Address:	2245 South St.				
City:	Elgin, IL	State:	IL	Zip:	60123
Email:					

From: Michael Metz <mmetz@CLIMATEPROSINC.COM>
Sent: Wednesday, November 30, 2016 12:51 PM
To: kdotcomments@co.kane.il.us
Cc: Mitchell, Jennifer
Subject: Randall Road - Weld Road - US Route 20 Traffic Flow Improvements (Metz)
Attachments: Phase 1 Steps A1 through A10.png; Phase 2 Steps B1 through B2.png; Phase 3 Steps C1 though C6.png

Good Afternoon Ms. Flock and Ms. Mitchell,

Randall Road - Weld Road - US Route 20 Traffic Flow Improvements

I attended the open house public hearing that was held on November 15th at Elgin Community College and had an opportunity to review both the proposed dual left turn intersection improvements, the preferred alternative, and speak to several KDOT employees pertaining to this to discuss the future estimated traffic load, and the plan to handle these traffic concerns at this interchange.

As an Elgin resident and homeowner in the College Park subdivision, I do welcome change. The South Street addition west of Randall Road is wonderful. So when I reviewed the Free Flow Entrance as the preferred alternative by making an existing road into a dead end cul-de-sac, I was taken aback since what is the point of having a street that goes nowhere and the proposed replacement forces more traffic from this subdivision onto Randall Road at South Street. As for the Free Flow Entrance, it only benefits 4.5 northbound Randall Road vehicles per minute accessing eastbound U.S. Route 20, and not the majority of traffic on Randall Road, so I have proposed the following.

Objective: While maintaining public safety, upgrade Randall Road- Weld Road - US. 20 East bound traffic dynamics to be able to handle additional interchange traffic from North and Southbound Randall Road on and off of U.S. Route 20 East through year 2024.

The four most noticeable improvements to promote traffic flow are:

- Elimination of the traffic light at the Randall and Weld Road intersection.
- Elimination of center north and south turn lanes located on Randall Road at the Randall and Weld Road intersection.
- A new entrance on to east bound U.S. Route 20 from Weld Road for north bound Randall and Weld Road traffic wanting to get onto U.S. Route 20 east.
- A new separate exit off of east bound U.S. Route 20 onto Weld Road for north bound Randall and Weld Road traffic.

These improvements can be performed in three construction phases.

- 1) Adding an East bound entrance ramp to U.S. 20 located east of the Randall-Weld Road intersection (accessible by Northbound Randall Road and Weld Road traffic).
- 2) Adding a 2nd east bound US. 20 exit ramp east of Randall Road onto Weld Road (for drivers intending on traveling north onto Randall Road).
- 3) Eliminating the stop light at Randall and Weld Road.

Renovation Phases

Phase 1 (Build U.S. 20 East Entrance Ramp and identify with signs)

A1: After surveys are completed, build an east bound US Route 20 entrance ramp east of Randall Road at Weld Road and Hawthorne Street intersection.

A1, A2, A3, A4: Install signs on East bound Weld Road indicating access ramp on to east bound US Route 20.

A5, A6: Install signs on West bound Weld Road indicating access ramp on to east bound US Route 20 for cars only, no semi trucks with trailers.

A7, A8, A9: Install signs on Northbound Randall Road indicating new US Route 20 east bound access on ramp.

A10: After A1-A9 has been operational for 30 days, eliminate access to north bound Randall Road center turn lane for traffic wanting to access US.20 east with temporary reflector based barricades.

A10: Eliminate the Randall Road north center turn lane left traffic signal turn arrow at the intersection of Randall and Weld Road.

Phase 2 (Right Turn only from Weld Road on to Randall Road)

B1: Install signs on West bound Weld Road when approaching Randall Road intersection "Right Turn Only".

B2: At the intersection of Randall and Weld Road, eliminate the south bound Randall Road center left hand turn lane and left traffic signal turn arrow.

Phase 3 (Build new exit off of US Route 20 onto Weld Road for Randall Road North bound traffic.

C1: Just east of the Randall Road bridge over U.S. Route 20, **build a new exit ramp off of East bound U.S. 20 that tees into Weld Road which would allow access to: North bound Randall Road only and East bound Weld Road.***

C2: Install new signage on existing U.S. 20 exit east for Randall Road South only exit.

C3: Install new signage on newly created U.S. 20 east exit for Randall Road North exit.

C4: At the intersection of Randall and Weld Road, install a reflective north-south divider all the way through the intersection where the turn lanes on Randall Road were prevent people exiting the first U.S. 20 exit and attempting to turn left on to Randal Road Northbound.

C5: Install three reflective barriers directing and preventing traffic exiting the original U.S. Route 20 eastbound exit from being able to turn left on to northbound Randall Road or go straight through the intersection onto Weld Road.

C6: Lastly, remove the Randall and Weld Road intersection traffic lights.

Additional information and thoughts pertaining to construction phases and ramp placement.

A1: East bound US Route 20 entrance ramp at Weld Road and Hawthorne Street intersection. This intersection was selected for three reasons:

- 1) It pulls turning traffic away from Randal Road and will provide minimal interference with Construction in Phase 3.
- 2) The elevation difference between Weld Road and U.S. Route 20 is minimal.
- 3) Traffic exiting Marcus Elgin Cinema can gain access to U.S. Route 20 via a right turn onto Weld Road without having to drive on to Randall Road.
- 4) The College Park residents can access Route 20 eastbound via Weld Road without having to add additional traffic load to Randall Road.

A5, A6: Based on the new entrance on to East bound U.S. Route 20, semi truck traffic with trailers would be restricted from using this exit only when they are traveling west bound on Weld Road to eliminate the tight turning radius.

A7-A9: Signage would be installed to notify and train drivers for 30 days prior to making and Randall Road – Weld Road center turn lane changes.

A10: Eliminate the Randall Road north center turn lane and left traffic signal.

This is beneficial for being several reasons:

- 1) It eliminates the Northbound Randall Road turn lane congestion waiting to access U.S. Route 20 East.
- 2) It eliminates Northbound Randall Road traffic hazard of having the need to cross over Southbound Randall Road when attempting to access Route 20 East.
- 3) This frees up the limited space on Randall Road bridge for future lane reassignment if need after Phase 3 is completed.

B1: West bound Weld Road traffic will only be able to turn right on to Randall Road. This phase is a training process by training traffic flow approaching Randall Road from what they were use to at this intersection.

B2: Eliminate the Randall Road south center turn lane and left traffic signal on to Weld Road. This is one concession that drivers that use this to get off of Randall Road traffic congestion will no longer be able to do.

It is beneficial to eliminate this center turn lane for similar reasons as **A10:**

- 1) It eliminates Southbound Randall Road traffic hazard of having the need to cross over Northbound Randall Road when attempting to access Weld Road.
- 2) This frees up the limited space on Randall Road bridge for future lane reassignment if need after Phase 3 is completed.

***C1:** This U.S. Route 20 east bound exit/entrance interchange was cut and pasted from an identical U.S. Route 20 interchange in Elgin. This exact interchange is located on the north side of U.S. Route 20 and Grace Street. Nothing about this interchange was altered when it was cut and pasted including the length of the transitions off of and on to U.S. Route 20 and the branch teeing into Weld Road.

The purpose of a tee exit-yield onto Weld Road instead of a continuous flow directly on to Randall Road will provide Southbound Randall Road congestion-bottle neck relief via Weld Road for ECC students and for businesses in the Fleetwood Drive Industrial Park located just north of ECC.

C2: The existing eastbound U.S. Route 20 exit on to Randall Road would become a dedicated exit for Southbound Randall Road traffic only.

C3: The newly constructed eastbound U.S. Route 20 exit on to Randall Road would become a dedicated for Northbound Randall and Weld Road traffic.

C4: This reflective north-south divider installed on Randall Road would have to be installed at the same time as C5 to keep North and Southbound traffic separated while drivers become acclimated to the intersection improvements.

C5: These reflective barriers are more of a guide to direct drivers to prevent them from accessing this area of Randall Road.

C6: The traffic light removal is realistic but to keep the unity of between the constant flow right green arrow from the traffic signal on the north side of U.S. Route 20 Westbound traffic merging on to Randall Road South, these traffic signals might be reassigned to be directional as well.

I realize as resident in College Park subdivision where this proposed upgrade work will happen, I have a vested interest to make it better since all my neighbors (and 50,000 Randall Road travelers) will be using it on a daily basis. I entertain your thoughts and questions pertaining to this proposed interchange upgrade and would be willing to meet with you in person to discuss it. Thank you for your time and consideration.

Sincerely,

Michael Metz



CLIMATE PROS, INC.

55 N Brandon Dr.
Glendale Heights, IL 60139
Tele: 630.893.8511
Fax: 630.942-8512

www.climateprosinc.com

REFRIGERATION – HVAC – ELECTRICAL – CARPENTRY – ENERGY MANAGEMENT – PROJECT
MANAGEMENT & DESIGN

November 12, 2016

TO: Kane County Division of Transportation

FROM: Residents of 10N772 - 10N894 S. Airlite Street, Elgin, IL 60123

Re: Closing of intersection of Randall Road and US 20/Weld Road (East)

We, the undersigned, strongly recommend that you do not close this intersection. The other end of Weld at McLean has already been closed. Closing this intersection would leave only one direct access to the McIntosh subdivision (South Street). There is a place of worship at Weld Road and Airlite, and Airlite and South Street would probably become their main access. Airlite is only one block long here and we have many children. Since South Elgin Fire Department serves our subdivision, closing Weld would further limit their access to homes near Weld. Please reconsider closing Weld Road.

Marianna Huntley 10N772 S Airlite St
Robert S. Schroeder + Judith Schroeder 10N786 S. Airlite St.
Jill Ann 10N818 S. AIRLITE ST.
John Smith 10N 830 S AIRLITE ST
Eric Bohue 10N829 S. Airlite St.
Mark Bohue 10N852 S. Airlite St
Al Lancaster + Audrey Alexander 10N872 S. Airlite St.
Ann Marie [unclear] 10N873 S Airlite St.
[unclear] 10N961 S. Airlite Street.
[unclear] 10N849 S Airlite
Sandy Bell 10N889 S. Airlite St.
Mr & Mrs Thompson 10N819 South Airlite Elgin, IL

Robert L. and Judith A. Schroeder
10N786 S. Airlite Street
Elgin, IL 60123
847-695-2184

November 15, 2016

Kane County Division of Transportation

Re: Closing of intersection of Randall Road and US 20/Weld Road (East)

Dear Sirs:

We have a suggestion regarding the above mentioned project. If your main objective is to keep people from crossing over onto Larkin Avenue (prohibited), why not just put up a guardrail to go past Larkin. This would be a less expensive way to solve the problem, and would be more pleasing to the residents of the McIntosh Subdivision. We hope you will seriously consider this suggestion.

Sincerely,


Robert L. Schroeder


Judith A. Schroeder

Sims, Kelly

From: Sims, Kelly
Sent: Wednesday, December 21, 2016 2:16 PM
To: Sims, Kelly
Subject: FW: Randall Rd/Weld Rd Project

From: bethw [<mailto:bethw@comcast.net>]
Sent: Wednesday, December 07, 2016 12:12 AM
To: KDOT Comments Email
Subject: Randall Rd/Weld Rd Project

Hello

I'm sorry to correspond late in the game about this project. I know we were able to forward our concerns after the public hearing & I also realize my feedback may be too late.

I've lived on Hawthorne, between South & Weld since Sept 30, 2003 - best neighborhood I've ever lived in. The unincorporated status of the area was a draw for us although knowing we wouldn't have the benefit of city water, curbs & sidewalks.

We lost our east end access to McLean due to that major-thought it would never end- project. I now have to take South & head towards ECC & maneuver thru semi trucks & 18 year olds just to get to McLean . It was a pretty big disappoint for us.

The news of losing my west end access to Randall was an even bigger shock. I expressed my concern with dead ending Weld after the theater north end exit, predicting traffic from their lot will use that exit & turn south into our neighborhood, to race (and race they do) over to South to head west to Randall, rather than dealing with parking lot traffic all trying to funnel out by the bank. I'll remind you again that our streets have no sidewalks & our neighborhood children use the street for walking, playing & riding bikes - we don't need more cars on our roads.

I personally use Weld 2 to 3 times a day, every day. I don't want to lose my access to Randall and I don't want additional cars using my street as a back entrance to Marcus. I also don't want to be sitting at South & Hawthorne, waiting, trying to turn left or right due to increased traffic.

I saw no benefit to my neighborhood in any of the proposals except for making no change at all. If this 'improvement' happens - which I'm sure that decision had already been made- I recommend closing the theatre exit. I'm stopping short of asking for dead ending Hawthorne because I still want access to Weld.

These proposals, I fear, would change the whole dynamic of this neighborhood that I live so much.

Thanks for listening.

Beth Warren
10n827 Hawthorne
847 602 0983

Sent via the Samsung GALAXY S@4, an AT&T 4G LTE smartphone

Sims, Kelly

From: Sims, Kelly
Sent: Wednesday, December 21, 2016 2:17 PM
To: Sims, Kelly
Subject: FW: Randall Road and US 20 /Weld Road

From: Vicky Pettenuzzo [<mailto:vpettenuzzo@stmcentral.org>]
Sent: Monday, November 28, 2016 3:04 PM
To: KDOT Comments Email
Subject: Randall Road and US 20 /Weld Road

Ms Flock,

I am a resident of College park for 31 years. I just found out about the meeting for this proposal a week after it was over.

I live on Gale St. and the corner of South. We can not get out of our street now. there was just an accident two weeks you literally can not see to get out.

You are proposing to add more traffic with ECC and all the trucking companies to south street. I would like to be able to voice my opinion with the City of Elgin.

Please inform me of the plans and an explanation. I have found that neighbors also were not notified.

Thanks

--

Victoria Pettenuzzo
Admin. Asst.
St. Thomas More School

Sims, Kelly

From: Sims, Kelly
Sent: Wednesday, December 21, 2016 2:19 PM
To: Sims, Kelly
Subject: FW: Train Derails in Burlington, Randall Road Changes?, Deadly Deer - And More From Kane County Connects, Tuesday, Nov. 15, 2016
Attachments: Slingshot.txt

From: christinejacobsen@comcast.net [<mailto:christinejacobsen@comcast.net>]
Sent: Thursday, November 17, 2016 7:26 PM
To: kanecountyconnects@gmail.com; Boesch, David; Planning Staff Email; KDOT Comments Email
Subject: Re: Train Derails in Burlington, Randall Road Changes?, Deadly Deer - And More From Kane County Connects, Tuesday, Nov. 15, 2016

Responding to article on Kane County Division of Transportation closing Weld Road eastbound of Randall Road for Rte 20 access. The 1 day notification of public hearing had not been enough time of hearing notification. Question the lack of posting on Weld Road of proposed hearing date. Myself, and co-workers using this route are concerned, and feel there had been a lack of communication by Kane County Division of Transportation on this issue. Local office businesses, and employees utilize this route - public opinion on design and impact are important.

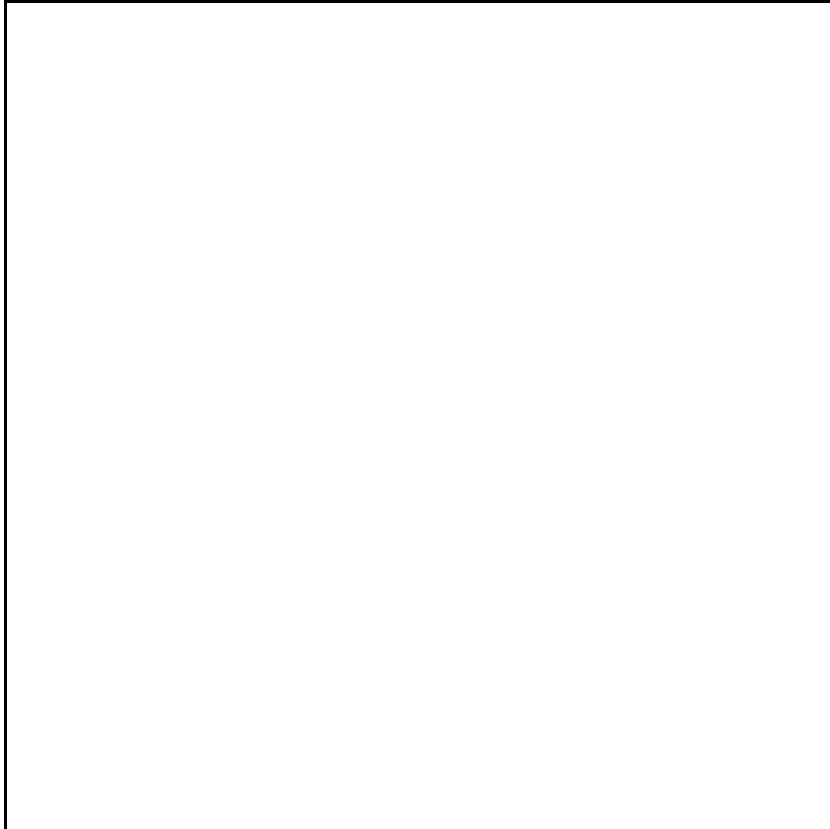
Regards,
Christine Jacobsen

From: "Kane County Connects" <kanecountyconnects@gmail.com>
To: christinejacobsen@comcast.net
Sent: Tuesday, November 15, 2016 6:04:36 AM
Subject: Train Derails in Burlington, Randall Road Changes?, Deadly Deer - And More From Kane County Connects, Tuesday, Nov. 15, 2016

¶ Having trouble viewing this email? [Click here](#) ¶

▪

PUBLIC SAFETY / SHERIFF'S OFFICE



**Truck Hits Moving Train,
Causing 4-Car Derailment
in Burlington**

A box truck failed to stop in time and rammed into a moving train, causing the derailment of four train cars and blocking two rail crossings Saturday (Nov. 12, 2016) in Burlington Township. Astonishingly, no one on the train was hurt, and the driver sustained minor injuries.

[Read More](#)



TRANSPORTATION / EVENTS

KANE COUNTY WEATHER

PATCHY FOG, THEN SUN

Tuesday, Nov. 15
Patchy fog before 9am.

Otherwise, partly

sunny, with a high near 55. West northwest wind 5 to 10 mph, with gusts as high as 20 mph.

Wednesday, Nov. 16

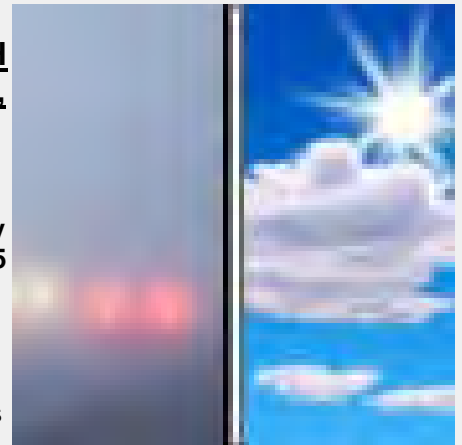
Sunny, with a high near 57. Northwest wind around 5 mph becoming south southeast in the afternoon.

Thursday, Nov. 17

Sunny, with a high near 64.

Friday, Nov. 18

A chance of showers and thunderstorms after noon. Partly sunny, with a high near 62.



TRANSPORTATION

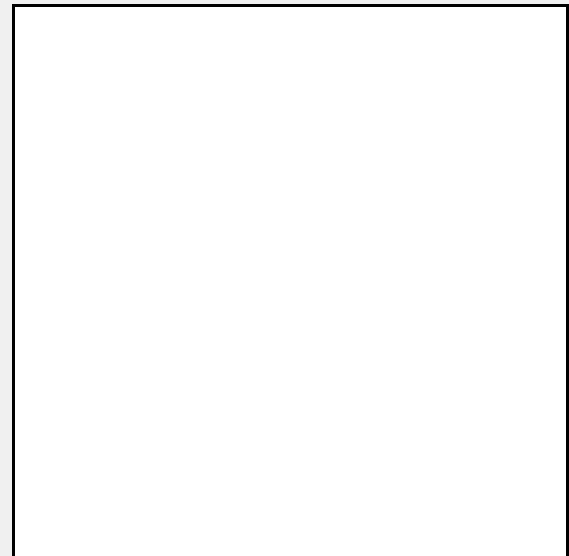
Open House TODAY on Improvements to Randall Road, Weld Road Intersection

County officials are proposing to close Weld Road (East) and construct free-flow right turns to access eastbound U.S. 20 from both northbound and southbound Randall Road. The open house and public hearing is from 4 p.m. to 7 p.m. at Elgin Community College.



[Read More](#)

SAFETY / NATURE / TRANSPORTATION



CLICK HERE TO TAKE KDOT'S 5-MINUTE ONLINE SURVEY!

[Read More](#)

KANE COUNTY

Get Your FREE Prescription Drug Discount Card Today!



[Read More](#)

CALENDAR

KANE COUNTY GOVERNMENT



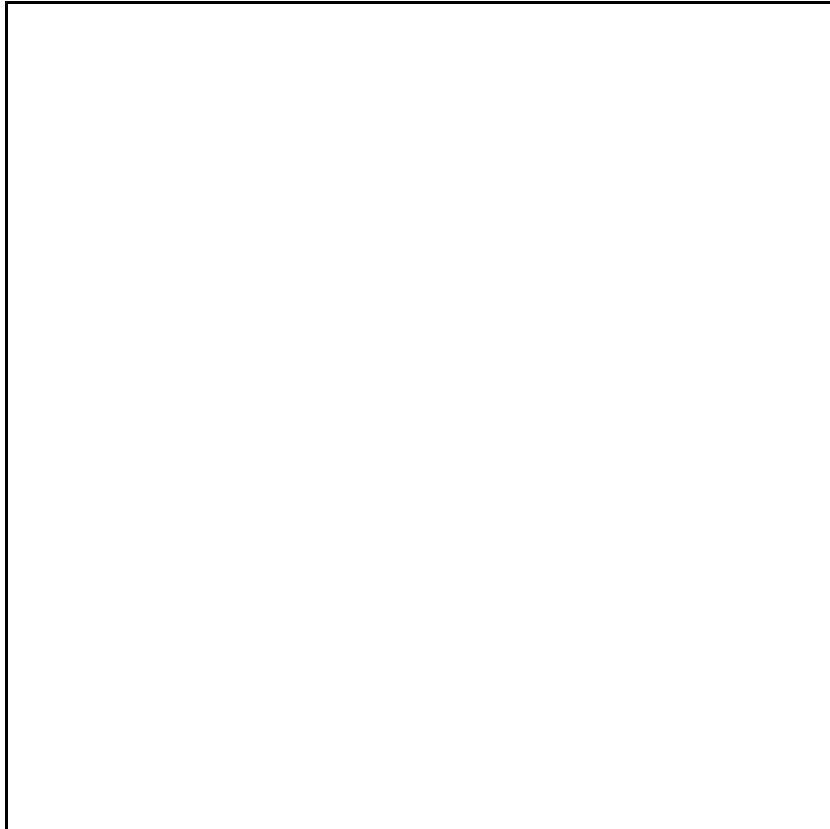
**Oh,
Deer:
Mating
Season
Means
Danger
on Kane
County
Roads**



The good news is that Kane County did NOT make the top 10 Illinois counties for deer accidents this year, as it has in the past. The bad news is that mating season has arrived, and the potential for serious accidents is as high as it gets.

[Read More](#)

COMMUNITIES / GOVERNMENT / TAXPAYERS



[Kane County Homepage](#)

9 a.m. Tuesday, Nov. 15
[Transportation](#)

10:30 a.m. Tuesday, Nov. 15
[County Development](#)

8:30 a.m. Wednesday, Nov. 16
[COUNTY BOARD \(Special Meeting\)](#)
A special County Board meeting is called to consider the issuance of Taxable General Obligation Bonds (Alternate Revenue Source) in an amount not to exceed \$55.5 million, for the purpose of funding all or a portion of the unfunded Illinois Municipal Retirement Fund.

9 a.m. Wednesday, Nov. 16
[Public Health](#)

10 a.m. Wednesday, Nov. 16
[Legislative](#)

9 a.m. Thursday, Nov. 17
[Public Service](#)

10 a.m. Thursday, Nov. 17
[Agriculture](#)

9 a.m. Friday, Nov. 18
[Human Services](#)

10:30 a.m. Friday, Nov. 18
[Jobs](#)

THIS WEEK

Nov. 15
[Open House on Randall and Weld Road Intersection Improvements](#)

Nov. 17
[GIS Day in Kane County](#)

[Judson University's Shark Tank Pitch Competition](#)

Nov. 18
['I Love America' New Friends and Neighbors Trivia Night](#)

[Friends of KCAC Concert for a Cause](#)

NEXT RECYCLING EVENT

- [SATURDAY, JAN. 14](#)

Carpentersville: Lower Tax Rate Comes With FY2017 Budget

As Carpentersville grows, the village's tax rate declines. That was the message from village officials, who announced in a news release last week the details of the village's \$30 million FY2017 General Fund budget.

[Read More](#)



IN THE COURTS

Joliet Man Gets 105 Years For Drug Deal That Ended in Murder



A Joliet man will likely spend the rest of his life in prison for shooting and killing an Aurora man during a 2014 drug deal that turned into an armed robbery and murder.

[Read More](#)

PREVIOUS E-NEWSLETTER

IN THE COURTS

Kane's Synthetic Marijuana Conviction 'Sends a Message'

[Read More](#)

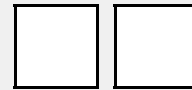
TRANSPORTATION



[CLICK HERE TO SIGN UP FOR OUR E-NEWSLETTER](#)

BOOKMARK OUR BLOG!
KaneCountyConnects.com

[SIGN UP FOR THE HEALTH MATTERS E-NEWSLETTER](#)



Aurora's Ohio Street Bridge Gets \$7.8 Million Upgrade

[Read More](#)

=

Rick Nagel,
Outreach Coordinator

630.208.5133 | kanecountyconnects@gmail.com

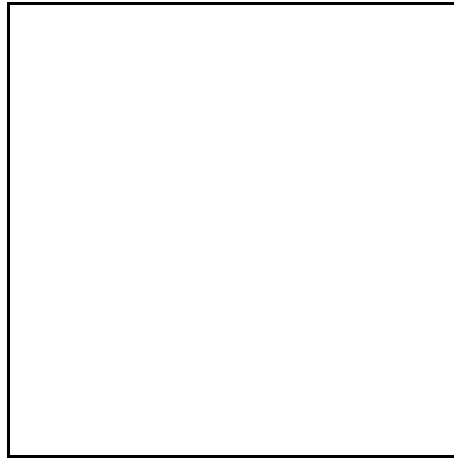
Kane County Connects
719 S. Batavia, Ave., Geneva, IL 60134

Kane County Government, 719 S. Batavia Ave., Geneva, IL 60134

[SafeUnsubscribe™ christinejacobsen@comcast.net](#)

[Forward this email](#) | [Update Profile](#) | [About our service provider](#)

Sent by kanecountyconnects@gmail.com in collaboration with



Try it free today



Appendix E. Transcript

1
2
3
4
5
6
7
8
9
10
11
12
13
14
15
16
17
18
19
20
21
22
23
24

RANDALL ROAD AT US20/WELD ROAD (East)
INTERSECTION IMPROVEMENTS PROJECT

STATEMENT OF:
MR. JOHN O'SHEA
ACL STORAGE, LLC
1741 Weld Road
Elgin, Illinois

NOVEMBER 15, 2016

ELGIN COMMUNITY COLLEGE
1700 SPARTAN DRIVE
ELGIN, ILLINOIS

CHIMNIAK COURT REPORTING & VIDEO
Telephone: 312.781.9111

REPORTED BY: Cordelia Busse Wert
CSR License No. 84-2985

1
2
3
4
5
6
7
8
9
10
11
12
13
14
15
16
17
18
19
20
21
22
23
24

MR. O'SHEA: My name is John O'Shea.
I'm owner of ACL Storage on Weld Road.

While I'm certainly all for safety and improved traffic flow and control, I'm concerned about what the virtual turning Weld Road into a dead-end road is going to do to my business.

Right now 80 percent of my business is drive-by. You're effectively shutting down all drive-by business, and I'm curious as to it's effects.

I guess that's about it.

(End of Statement.)

1
2
3
4
5
6
7
8
9
10
11
12
13
14
15
16
17
18
19
20
21
22
23
24

RANDALL ROAD AT US20/WELD ROAD (East)
INTERSECTION IMPROVEMENTS PROJECT

STATEMENT OF:
MS. RUTH WERST
2245 South Street
Elgin, Illinois

NOVEMBER 15, 2016

ELGIN COMMUNITY COLLEGE
1700 SPARTAN DRIVE
ELGIN, ILLINOIS

CHIMNIAK COURT REPORTING & VIDEO
Telephone: 312.781.9111

REPORTED BY: Cordelia Busse Wert
CSR License No. 84-2985

1 MS. WERST: Well, my name is Ruth
2 Werst.

3 As a resident who lives on South
4 Street, I have concerns about what this means
5 for traffic in a residential area.

6 Cutting off Weld Road would only
7 leave South Street as an entrance/exit for
8 residents. This would mean all the traffic
9 coming from the north on Randall and due west
10 from Route 20 would now go only on South
11 Street to their commercial places of business
12 which is mostly truck traffic or a large
13 percent of truck traffic.

14 And also the ECC students, the
15 students find they're often in a rush to get
16 to their classes on time, or when they're
17 leaving, they're in a hurry to go someplace
18 else by a certain time.

19 When there's an accident at the
20 intersection of South Street, that cuts off
21 the other main exit that we have to and from
22 Randall.

23 The movie theater also gets a lot
24 of traffic, and I can't imagine taking their

1
2
3
4
5
6
7
8
9
10
11
12
13
14
15
16
17
18
19
20
21
22
23
24

main entrance/exit from Randall Road.

And I don't know what that would do to traffic because the commercial streets by those fast foods places can't handle the traffic often times now, and it gets really backed up. If they took away that Weld Road, that would really back up this area even more than it is.

And one place particularly on South Street going into that back road to the commercial businesses is quite a dangerous place.

So those are my main concerns.

(End of Statement.)

1
2
3
4
5
6
7
8
9
10
11
12
13
14
15
16
17
18
19
20
21
22
23
24

RANDALL ROAD AT US20/WELD ROAD (East)
INTERSECTION IMPROVEMENTS PROJECT

STATEMENT OF:
MS. SHEILA HAWKINS
10N814 Hawthorne Street
Elgin, Illinois

NOVEMBER 15, 2016

ELGIN COMMUNITY COLLEGE
1700 SPARTAN DRIVE
ELGIN, ILLINOIS

CHIMNIAK COURT REPORTING & VIDEO
Telephone: 312.781.9111

REPORTED BY: Cordelia Busse Wert
CSR License No. 84-2985

1
2
3
4
5
6
7
8
9
10
11
12
13
14
15
16
17
18
19
20
21
22
23
24

MS. HAWKINS: My name is Sheila
Hawkins.

My concern is that I feel we need
a 24-hour survey count of the trucks on Weld
Street and South Street to see how much that
will increase on South Street, the truck
traffic.

And a pedestrian bridge is needed
from South Street to cross Randall because
it's so hard. We have a lot people in our
community that do not have cars. So it makes
it difficult for them to get done what they
need to get done to get across Randall.

That's it.

(End of Statement.)

1
2
3
4
5
6
7
8
9
10
11
12
13
14
15
16
17
18
19
20
21
22
23
24

RANDALL ROAD AT US20/WELD ROAD (East)
INTERSECTION IMPROVEMENTS PROJECT

STATEMENT OF:
MS. MONICA MERHAUT
2201 South Street
Elgin, Illinois

NOVEMBER 15, 2016

ELGIN COMMUNITY COLLEGE
1700 SPARTAN DRIVE
ELGIN, ILLINOIS

CHIMNIAK COURT REPORTING & VIDEO
Telephone: 312.781.9111

REPORTED BY: Cordelia Busse Wert
CSR License No. 84-2985

1 MS. MERHAUT: My name is Monica
2 Merhaut. I live on South Street and
3 Hawthorne.

4 Shutting down Weld Road will
5 increase South Street traffic for ECC and
6 industrial area use.

7 I would be interested in a 24-hour
8 surveillance count of truck traffic currently
9 using Weld Road and currently using South
10 Street because shutting down Weld Road would
11 cause the existing truck traffic there to use
12 South Street. It's a residential area with a
13 30-mile-an-hour speed limit, and I just feel
14 it's unsafe to increase the truck traffic
15 there.

16 Thank you.

17 (End of Statement.)
18
19
20
21
22
23
24

1
2
3
4
5
6
7
8
9
10
11
12
13
14
15
16
17
18
19
20
21
22
23
24

RANDALL ROAD AT US20/WELD ROAD (East)
INTERSECTION IMPROVEMENTS PROJECT

STATEMENT OF:
MR. WALT HOLLENDER
340 Loyola Drive, Apt. B
Elgin, Illinois

NOVEMBER 15, 2016

ELGIN COMMUNITY COLLEGE
1700 SPARTAN DRIVE
ELGIN, ILLINOIS

CHIMNIAK COURT REPORTING & VIDEO
Telephone: 312.781.9111

REPORTED BY: Cordelia Busse Wert
CSR License No. 84-2985

1 MR. HOLLENDER: My name is Walt
2 Hollender, H-O-L-L-E-N-D-E-R.

3 I'm looking for the data about how
4 much additional traffic is going to be
5 shunted onto South Street due to this
6 construction and change and whether or not
7 there are additional plans being made to
8 accommodate that extra traffic or is it just
9 going to be what it is and we're looking down
10 the road for further analysis.

11 I'm also kind of concerned -- I
12 thought from the description, it would be
13 getting a light eliminated from the south
14 side of the bridge on Randall with this
15 change, but the stoplight has to stay to
16 accommodate traffic that's eastbound on 20
17 and exiting onto Randall because that has to
18 be a protected turn at this point in time.
19 There's no call for that.

20 But the left turn traffic off of
21 Randall onto US20 eastbound will be
22 eliminated. Northbound traffic on Randall,
23 there's no left turns there, either. And for
24 southbound traffic, there's no left turn onto

1
2
3
4
5
6
7
8
9
10
11
12
13
14
15
16
17
18
19
20
21
22
23
24

Weld. So that's good. That's good.

But I don't know how much traffic there's going to be from Weld over to South Street. That's my big concern.

One more thing is that the timeframe is a little -- for the completion is little bit -- they're not sure if they're going to get funding. So this is all preliminary, I guess. It may not happen, given the State of Illinois finances and everybody else's finances, it might not happen at all in our lifetime.

(End of Statement.)

1
2
3
4
5
6
7
8
9
10
11
12
13
14
15
16
17
18
19
20
21
22
23
24

RANDALL ROAD AT US20/WELD ROAD (East)
INTERSECTION IMPROVEMENTS PROJECT

STATEMENT OF:
MR. FRED FRANKLIN
2027 South Street
Elgin, Illinois

NOVEMBER 15, 2016

ELGIN COMMUNITY COLLEGE
1700 SPARTAN DRIVE
ELGIN, ILLINOIS

CHIMNIAK COURT REPORTING & VIDEO
Telephone: 312.781.9111

REPORTED BY: Cordelia Busse Wert
CSR License No. 84-2985

1 MR. FRANKLIN: My name is Fred
2 Franklin.

3 I have been living about 18 years
4 on South Street, and I've noticed an increase
5 in traffic when they first closed Weld Road
6 on the east side down by McLean and now the
7 biggest concern is if they close Weld Road,
8 we're going to have more truck traffic which
9 is bad enough as it is. We have a problem
10 with speeders now. And the house shakes with
11 drywall cracking.

12 And it's just more of a concern
13 about the increased traffic, what it's going
14 to do to our road. Our road is in bad shape
15 to begin with, the potholes and everything
16 else, and nobody seems to be concerned about
17 that.

18 Like I said, my biggest concern is
19 the traffic and the trucks. I know they have
20 to have a place to go.

21 But also where's everybody -- I
22 mean, it's not that common, but we've almost
23 got run over three or four times trying to
24 walk across the street from Randall Road and

1
2
3
4
5
6
7
8
9
10
11
12
13
14
15
16
17
18
19
20
21
22
23
24

all that because it's people just speeding
there. That's the biggest problem, too.

I think that should just about say
it.

(End of Statement.)

1
2
3
4
5
6
7
8
9
10
11
12
13
14
15
16
17
18
19
20
21
22
23
24

RANDALL ROAD AT US20/WELD ROAD (East)
INTERSECTION IMPROVEMENTS PROJECT

STATEMENT OF:

MS. LINDA S. NARVAIZ
2027 South Street
Elgin, Illinois

NOVEMBER 15, 2016

ELGIN COMMUNITY COLLEGE
1700 SPARTAN DRIVE
ELGIN, ILLINOIS

CHIMNIAK COURT REPORTING & VIDEO
Telephone: 312.781.9111

REPORTED BY: Cordelia Busse Wert
CSR License No. 84-2985

1 MS. NARVAIZ: My name is Linda S.
2 Narvaiz, and I'm at 2027 South Street in
3 Elgin.

4 My concerns are more traffic on
5 South Street, more cars speeding. They
6 already speed, but speeding more. And more
7 truck traffic increased, it will be, you
8 know, worse.

9 And then right now for trying to
10 go across to the shopping center over at
11 Otter Creek, we can't even cross the road
12 without not getting hit or safely.

13 And that's about it.

14 (End of Statement.)
15
16
17
18
19
20
21
22
23
24

1
2
3
4
5
6
7
8
9
10
11
12
13
14
15
16
17
18
19
20
21
22
23
24

RANDALL ROAD AT US20/WELD ROAD (East)
INTERSECTION IMPROVEMENTS PROJECT

STATEMENT OF:

JOHN

(Preferred to Stay Anonymous)

Elgin, Illinois

NOVEMBER 15, 2016

ELGIN COMMUNITY COLLEGE
1700 SPARTAN DRIVE
ELGIN, ILLINOIS

CHIMNIAK COURT REPORTING & VIDEO
Telephone: 312.781.9111

REPORTED BY: Cordelia Busse Wert

1 JOHN: If you come off of Fleetwood
2 going east to turn left on McLean, and the
3 first light is Randall -- I'm sorry, 20, just
4 before the bridge, and if you want to turn
5 right, I think this is ridiculous, there's no
6 turn on red. Why? Who's the genius that
7 thought this up?

8 You know, if they're coming south
9 on Randall, there's two lanes. Why do you
10 need to stop on red? Nobody does. They just
11 blow right through it. And if you give
12 people a ticket for that, you're nuts. If
13 they did stop, how many thousands of gallons
14 of gasoline will be polluting the air?

15 Gas on, man.

16 (End of Statement.)
17
18
19
20
21
22
23
24

1
2
3
4
5
6
7
8
9
10
11
12
13
14
15
16
17
18
19
20
21
22
23
24

RANDALL ROAD AT US20/WELD ROAD (East)
INTERSECTION IMPROVEMENTS PROJECT

STATEMENT OF:
MR. WILLIAM WERST
2245 South Street
Elgin, Illinois

NOVEMBER 15, 2016

ELGIN COMMUNITY COLLEGE
1700 SPARTAN DRIVE
ELGIN, ILLINOIS

CHIMNIAK COURT REPORTING & VIDEO
Telephone: 312.781.9111

REPORTED BY: Cordelia Busse Wert
CSR License No. 84-2985

1 MR. WERST: My name is William Werst.
2 I live at 2245 South Street, Elgin. I am
3 also the last president of the College
4 Park-McIntosh Homeowner Association. It's
5 the association for the neighborhood on South
6 Street.

7 The primary proposal that I see is
8 very interesting, and I can see where it will
9 alleviate a number of problems on Randall
10 Road.

11 The 20/40 plan for Kane County and
12 Randall Road being widened in the future, I
13 want to be sure that this plan will
14 encumber -- not encumber, but will take into
15 consideration what some of those additional
16 plans are in the future, how that will impact
17 what we have in this plan as well as for the
18 20/40 plan for Randall Road.

19 The closing off of Weld Road will
20 be shifting the traffic flow that is
21 currently on Weld Road into a residential
22 neighborhood on South Street, that would be
23 the only other alternative to the
24 neighborhood, and a lot of thru traffic is

1 now coming in from the west. So this will be
2 an additional amount of traffic that will
3 come through the neighborhood.

4 The neighborhood really is not set
5 up to handle a lot more traffic and whether
6 this generates the volume of safe traffic
7 going through a residential area is the
8 question.

9 Also, currently we do have some
10 parking on South Street, and whether this
11 will eliminate parking on South Street, we
12 don't know. But as it is right now, we still
13 need parking for the residents on South
14 Street.

15 The County currently has not
16 addressed the traffic in the neighborhood
17 now. Some of the traffic does exit through
18 the McIntosh subdivision up to Weld Road to
19 have access out onto Randall. That would be
20 cut off. And putting additional traffic onto
21 South Street will delay some of the traffic
22 from the residences on South Street as well
23 as those coming out of the neighborhood on
24 side streets. So it will slow down access to

1 the entrance -- or traffic in or out of the
2 neighborhood.

3 The County also has not addressed
4 pedestrian traffic. Now, granted, in this
5 particular proposal, pedestrian traffic is
6 not much of a problem. There is no
7 pedestrian traffic up in that area. However,
8 it's going to shift traffic into an area that
9 the County still needs to address pedestrian
10 traffic.

11 Right now it's very difficult for
12 pedestrians to cross Randall Road from South
13 Street or from the entrance in and out of the
14 shopping center. So that should actually be
15 addressed as part of this because of the
16 change in traffic patterns.

17 The closing of Weld Road will
18 impact emergency services that are received
19 in the McIntosh subdivision which is the area
20 north of South Street. They will have to
21 come all the way down to South Street to get
22 into that part of the neighborhood. South of
23 South Street, it won't make much difference
24 because they still have use of South Street

1 for that aspect.

2 Some of the businesses on Weld
3 Road will have an impact from the change of
4 traffic off of Weld Road, particularly those
5 that are between South Street and Shepherd
6 Drive. There are not that many businesses
7 there, but it will still have a little bit of
8 an impact there.

9 Right now the people -- some of
10 the traffic going to the movie theaters,
11 IHOP, and Applebee's use Weld Road to get in.
12 They will now have to exit back to the
13 previous traffic light to be able to get in
14 and out of the shopping center. That may
15 just be a learning curve for people using
16 those particular businesses.

17 I think that's it.

18 (End of Statement.)

19

20

21

22

23

24

1
2
3
4
5
6
7
8
9
10
11
12
13
14
15
16
17
18
19
20
21
22
23
24

RANDALL ROAD AT US20/WELD ROAD (East)
INTERSECTION IMPROVEMENTS PROJECT

STATEMENT OF:
MS. JUDITH SCHROEDER
10N786 South Airlite Street
Elgin, Illinois

NOVEMBER 15, 2016

ELGIN COMMUNITY COLLEGE
1700 SPARTAN DRIVE
ELGIN, ILLINOIS

CHIMNIAK COURT REPORTING & VIDEO
Telephone: 312.781.9111

REPORTED BY: Cordelia Busse Wert
CSR License No. 84-2985

1 MS. SCHROEDER: My name is Judith
2 Schroeder.

3 I am against changing Weld Road
4 and closing it off because that would limit
5 access to the McIntosh subdivision. It would
6 also limit access -- will have less of an
7 impact to the College Park area, but we do
8 live in the McIntosh subdivision on Airlite
9 Street.

10 I'm concerned because our street's
11 only one block long. We have many children
12 on our street, and there is a Jehovah's
13 Witness building at Weld and Airlite, the
14 address is on Airlite Street. They have --
15 they don't have services just on Sunday.
16 They have them almost every day of the week
17 because they have multiple congregations
18 using the building.

19 So that's my main concern, cutting
20 more access off. The other end of Weld has
21 already been cut off because of the McLean
22 interchange with 20.

23 Years ago; many, many, many years
24 ago, South Street was bisected by Route 20,

1 and that put us at a separate area of South
2 Street. Now we have no direct access from
3 the east, and now this would take away access
4 to the west. Our only access to the west
5 then really would be South Street, or if we
6 turn right on the street going to the
7 theater, we could turn left at the next red
8 light. So I'm just concerned that there's no
9 direct access for our subdivision if we do
10 this.

11 It took four years to do the
12 intersection of McLean and 20, and now they
13 want to start this right away. It's a lot of
14 noise. That's part of it. I know once noise
15 is done, it's done.

16 But the access is our main
17 concern.

18 Thank you.

19 (End of Statement.)
20
21
22
23
24

1
2
3
4
5
6
7
8
9
10
11
12
13
14
15
16
17
18
19
20
21
22
23
24

RANDALL ROAD AT US20/WELD ROAD (East)
INTERSECTION IMPROVEMENTS PROJECT

STATEMENT OF:
MS. JEANNINE PISARCZYK
10N960 Gale Street
Elgin, Illinois

NOVEMBER 15, 2016

ELGIN COMMUNITY COLLEGE
1700 SPARTAN DRIVE
ELGIN, ILLINOIS

CHIMNIAK COURT REPORTING & VIDEO
Telephone: 312.781.9111

REPORTED BY: Cordelia Busse Wert
CSR License No. 84-2985

1 MS. PISARCZYK: My name is Jeannine
2 Pisarczyk. We live on Gale Street which is
3 right behind the theater.

4 Our concern is that now that the
5 theater can only turn onto Weld Road to go
6 right instead of left to go to 20, that some
7 of those people instead of going down to
8 South Street through the parking lot are
9 going to come out onto Weld and come down
10 Gale to come across, to cut across to get
11 over to South Street so that they can get to
12 the light easier.

13 We are unincorporated. We have no
14 curbs or -- there's very little street light.
15 There's no sidewalks. We have children that
16 live in the neighborhood, just for people's
17 safety. And also our streets should not be
18 used as a thoroughfare. So that was our
19 concern.

20 Thank you.

21 (End of Statement.)
22
23
24

1
2
3
4
5
6
7
8
9
10
11
12
13
14
15
16
17
18
19
20
21
22
23
24

RANDALL ROAD AT US20/WELD ROAD (East)
INTERSECTION IMPROVEMENTS PROJECT

STATEMENT OF:

MR. JOE KARKUSIEWICZ
10N874 Belmont Street
Elgin, Illinois

NOVEMBER 15, 2016

ELGIN COMMUNITY COLLEGE
1700 SPARTAN DRIVE
ELGIN, ILLINOIS

CHIMNIAK COURT REPORTING & VIDEO
Telephone: 312.781.9111

REPORTED BY: Cordelia Busse Wert
CSR License No. 84-2985

1 MR. KARKUSIEWICZ: My name is Joe
2 Karkusiewicz. I am a resident of the
3 McIntosh subdivision.

4 I do like the proposed interchange
5 where they'd close off Weld Road because one
6 of the biggest problems I find is people that
7 don't belong on my street end up being on my
8 street because they use my subdivision to cut
9 through to go to Elgin Community College or
10 to work.

11 The only thing is I do wish that
12 if they're going to close it off, Weld Road
13 becomes 30 or 35 miles per hour instead of 45
14 like it is now, because you have too many
15 people on it that make the turn and they
16 insist on maintaining that 45 miles per hour
17 on my street because, in my opinion, the
18 speed limit sign on Belmont Street is too
19 close to the intersection. It should be set
20 further south.

21 But South Street is going to have
22 to have improvements done to it because a lot
23 of trucks use South Street. You also have a
24 lot of people that take South Street to

1 Second, and at Second and South Street,
2 there's been no improvements at that
3 intersection. 98 percent of all vehicles
4 that are on South Street, they make the turn
5 onto Second. They don't bother to go to Weld
6 Road anymore because there's no direct access
7 to McLean Boulevard anymore.

8 Oh, the other thing is I think if
9 they're going to have that traffic that
10 diverts from Weld Road to cut through the
11 shopping center on the east side of Randall
12 Road, they're going to have to eliminate that
13 one stop sign.

14 I know the businesses there would
15 appreciate some of the business from people
16 driving past, like the two restaurants and
17 the bank, but if you're going -- you're going
18 to have a lot of people blow the stop sign
19 anyhow.

20 The other thing is improvements
21 are going to have to be made at Randall Road
22 and the other Weld Road because, again,
23 they're going to have a lot more people that
24 are going through there or go all the way on

1
2
3
4
5
6
7
8
9
10
11
12
13
14
15
16
17
18
19
20
21
22
23
24

South Street and they expect to be able to
get onto Randall Road. And unless if things
are changed, I don't see that people are
going to like how it is.

That's it.

(End of Statement.)

1
2
3
4
5
6
7
8
9
10
11
12
13
14
15
16
17
18
19
20
21
22
23
24

RANDALL ROAD AT US20/WELD ROAD (East)
INTERSECTION IMPROVEMENTS PROJECT

STATEMENT OF:
MS. LISA CHILDS
10N818 South Airlite Street
Elgin, Illinois

NOVEMBER 15, 2016

ELGIN COMMUNITY COLLEGE
1700 SPARTAN DRIVE
ELGIN, ILLINOIS

CHIMNIAK COURT REPORTING & VIDEO
Telephone: 312.781.9111

REPORTED BY: Cordelia Busse Wert
CSR License No. 84-2985

1 MS. CHILDS: My name is Lisa Childs.

2 My biggest concern is that there's
3 going to be a huge increase of traffic on
4 South Street. South Street is a residential
5 street. There are children who are there
6 going to take the bus. There's already a lot
7 of truck traffic on that street because there
8 are, I think, two major trucking companies in
9 the industrial area, plus a lot of traffic
10 from Commonwealth Edison.

11 So if they close off Weld Road
12 going eastbound, all that traffic potentially
13 will be diverted to a residential street, and
14 I think that's my biggest concern.

15 Thank you.

16 (End of Statement.)

17

18

19

20

21

22

23

24

1
2
3
4
5
6
7
8
9
10
11
12
13
14
15
16
17
18
19
20
21
22
23
24

RANDALL ROAD AT US20/WELD ROAD (East)
INTERSECTION IMPROVEMENTS PROJECT

STATEMENT OF:
MR. PATRICK GIESKE
11N167 Williamsburg Drive
Elgin, Illinois

NOVEMBER 15, 2016

ELGIN COMMUNITY COLLEGE
1700 SPARTAN DRIVE
ELGIN, ILLINOIS

CHIMNIAK COURT REPORTING & VIDEO
Telephone: 312.781.9111

REPORTED BY: Cordelia Busse Wert
CSR License No. 84-2985

1 MR. GIESKE: My name is Patrick Gieske,
2 G-I-E-S-K-E.

3 My comments are: I would like to
4 see a temporary closing of Weld Road for a
5 couple of weeks to understand the impact of
6 the intersection of Weld west and Randall
7 along with the intersection of Randall and
8 South Street.

9 The signals are poor now with
10 turning eastbound on those intersections and
11 they would need to be adjusted with a loss of
12 that traffic flow, considering you're looking
13 at 200 cars per hour or 4 cars per minute.

14 So you need to improve the
15 northbound right-hand turn lane at Randall
16 and South Street because traffic will not be
17 able to turn onto Weld Road so you can get
18 more traffic there.

19 And then my question is: What
20 will be the impact at Airlite and Larkin when
21 northbound traffic will no longer use the
22 eastbound ramp to get off at Larkin? And
23 someone should check the accident reports
24 under the Randall and Larkin ramp.

1 And then additionally I think
2 there should be a one-way turnoff lane
3 onto -- if you're going northbound on
4 Randall. You need to look at the possibility
5 of having a single one-way access from Larkin
6 to Weld starting just north of the IHOP
7 parking lot which would allow access onto
8 Weld Road so trucks could get off to use Weld
9 but they would not impact traffic heading
10 west. The traffic will not be able to go
11 west on Weld past the current intersection.

12 That's it.

13 (End of Statement.)

1
2
3
4
5
6
7
8
9
10
11
12
13
14
15
16
17
18
19
20
21
22
23
24

RANDALL ROAD AT US20/WELD ROAD (East)
INTERSECTION IMPROVEMENTS PROJECT

LETTER SUBMITTED BY:

MS. SUSAN TYRREL
357 Cornell Lane
Elgin, Illinois

NOVEMBER 15, 2016

ELGIN COMMUNITY COLLEGE
1700 SPARTAN DRIVE
ELGIN, ILLINOIS

CHIMNIAK COURT REPORTING & VIDEO
Telephone: 312.781.9111

REPORTED BY: Cordelia Busse Wert
CSR License No. 84-2985

1 A letter submitted by Ms. Susan Tyrrel
2 reads as follows:

3
4 RE: Open House Public Hearing: Randall Road at
5 US20/Weld Road (East) Intersection Improvement

6
7 Dear Ms. Bonnie Flock and Ms. Jennifer Mitchell,

8 Thank you for the opportunity to
9 express my opinion on the proposed idea to block
10 access from Weld Road (Rd) in Elgin to the East
11 Route 20 entrance ramp in Elgin, Illinois. I
12 propose keeping the east end open and re-opening
13 the west end, as well.

14 I have lived in Elgin 32 years and in
15 the College Park-McIntosh neighborhood for 31
16 years when we could drive to Aurora on stoplight
17 free Randall Road in twenty minutes. Our entire
18 neighborhood, and businesses that surround it,
19 used the Weld Rd, east end, to easily access
20 McLean Boulevard (Blvd) and Route 20 East.

21 Consider the developments affecting our
22 neighborhood:

23 *Swift development of housing west of
24 Randall Road causing traffic to increase. This is

1 an ongoing complication for Elgin Planners.

2 *Development along Randall Road which
3 increased the amount of stoplights and congestion,
4 and, in our case, via South Street, taking us four
5 stoplights to get from Randall Road to westbound
6 Route 20. Traveling on Weld Road allows two
7 stoplights.

8 *Elgin Community College (E.C.C) has
9 been growing and changing to the best it's been
10 since we arrived in 1984. This development alone
11 increased traffic, however, the benefit outweighs
12 the inconvenience.

13 *A truck company was allowed to build
14 within the borders of South Street, Second Street,
15 Fleetwood Drive, and Shepherd Street quadrant.
16 This has damaged South Street beyond sufficient
17 repair and increased truck traffic exponentially.
18 Truck traffic in neighborhoods presents its own
19 safety hazards.

20 *The recent two-year McLean Blvd
21 project has choked our neighborhood into using
22 Second Street to Fleetwood Drive to access McLean
23 Blvd or Route 20; no, the Weld Road-Shepherd Drive
24 curve is only an option if one is driving to the

1 companies in that quadrant. To access Fleetwood
2 Drive toward McLean Blvd and Route 20 via the
3 curve is a lesson in futility; Elgin Community
4 College traffic and people and trucks trying to
5 get in and out of this neighborhood prevent left
6 hand turns onto Fleetwood Drive on many days.

7 Add to this the inconvenience of 'left
8 turn only' lanes onto McLean Blvd from Fleetwood
9 Drive and you may understand the maddening
10 situation and my request to have a fully opened
11 Weld Road.

12 I was under the impression that closing
13 the east end of Weld Road was temporary during the
14 construction. Weld Road is what I would call a
15 Frontage Road. It relieves traffic and allows
16 Emergency Vehicles the fastest roadway. Please
17 consider re-opening the east end of Weld Road and
18 keeping the west end open, as well, so we can get
19 back to work, school, and leisure, and not be
20 wasting time and miles winding through side
21 streets. I would suggest spending a significant
22 amount of time on our neighborhood roads and see,
23 for yourself, the inability to access McLean Blvd
24 and Route 20 logically. Closing the west end of

1 Weld Road is an ill-conceived idea.

2 I plan to attend the Tuesday, November
3 15, 2016 Open House Public Hearing to hear what
4 the Kane County Division of Transportation has to
5 say; I would especially like to speak to the
6 person on its staff who lives in our neighborhood.

7
8 Thank you,
9 Susan Tyrrel
10 Elgin resident

11 Cc:
12 Mayor Dave Kaptain
13 Police Chief Jeffrey Swoboda
14 Kane County Sheriff Donald E. Kramer
15 Kane County Board Chairman Chris Lauzen
16 Marni Pike, The Daily Herald

17 (End of Letter.)

18
19
20
21
22
23
24